

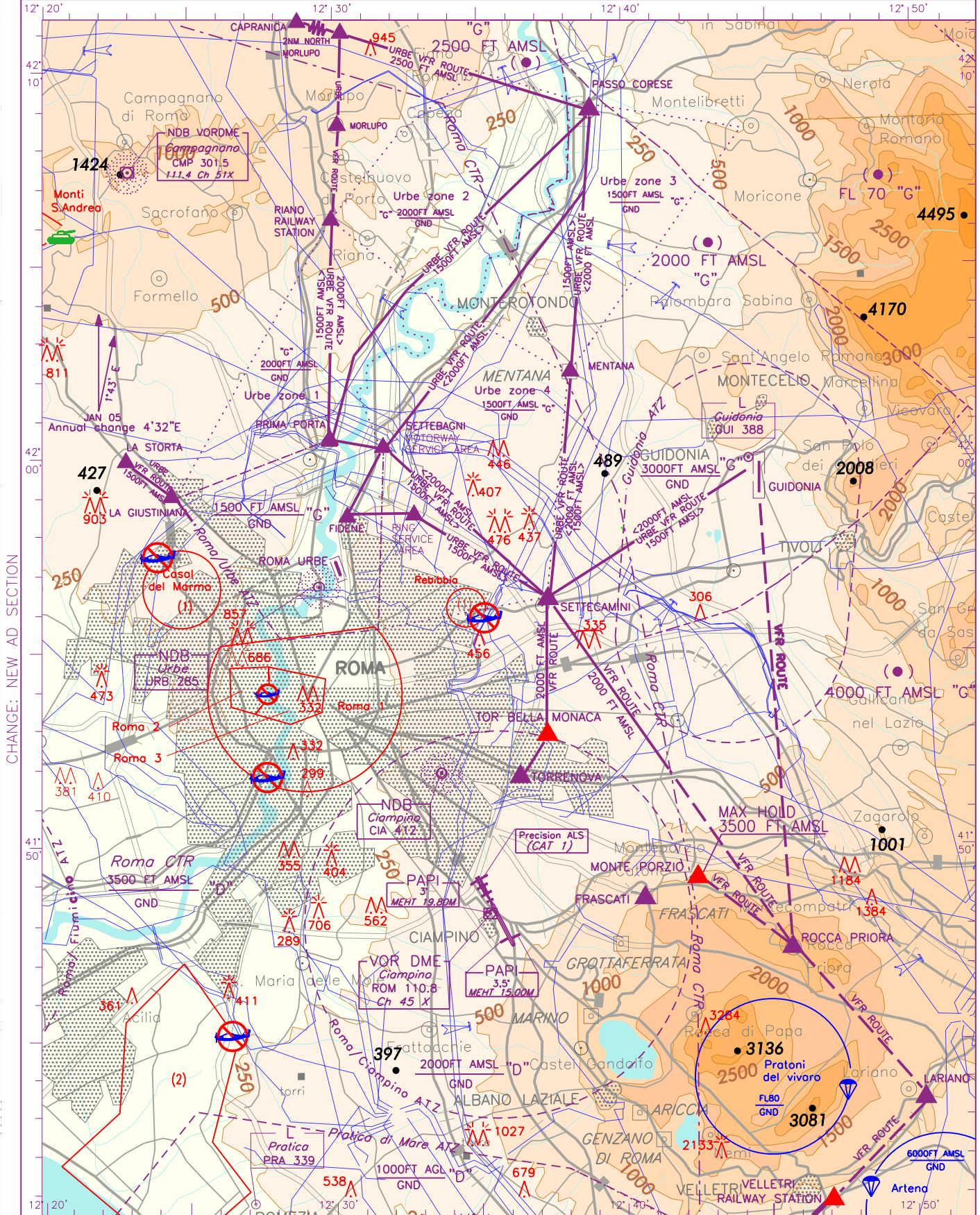


| | | |
|-----|-----------------|--------|
| APP | Roma Arrivals | 119.20 |
| | Roma Director | 119.20 |
| TWR | Ciampino Tower | 120.50 |
| GND | Ciampino Ground | 121.75 |
| FIS | Roma Info | 125.75 |

| | | |
|---------|---|---|
| AD ELEV | L | R |
| 427 | A | A |

ROMA/CIAMPINO

REMARK: FOR URBE VFR ROUTES DETAILS SEE ALSO AIP AD 2 LIRU 8-1 and 8-3.



CHANGE: NEW AD SECTION

AIRSPACE CLASSIFICATION - See AIP ENR 1.4

- Visual holding gate (an entry clearance shall be requested before proceeding)
- Military firing area (See AIP ENR 5.2.1-15)
- Visual reporting points
- Parachuting activity (See AIP ENR 5.5.1)
- VFR SECTORS (See AIP ENR 6.3-9)
- Parachuting activity (See also AIP ENR 6.3-9)

- (1) Overflying interdicted at or below 1500 Ft (see AIP-ENR5.6.1)
- (2) Overflying interdicted at or below 1500 Ft (see AIP-ENR5.6.2-27)
- Roma 1, 2, and 3 areas: See AIP ENR 5.6.1-7/9
- VFR ROUTE - Suggested VFR ROUTES - (AIRSPACE "G")
- MAX VFR ALTITUDE/LEVEL USABLE IN THE SECTOR (see also AIP Italia - ENR 6.3-9)

- TRANSITION ALTITUDE 6000FT
- Railroad
- Power line (with or without)
- Bearings are magnetic
- Elev and ALT in Ft AMSL.

REMARK: RWY 15
traffic pattern right.

APP Roma Arrivals
Roma Director
119.20

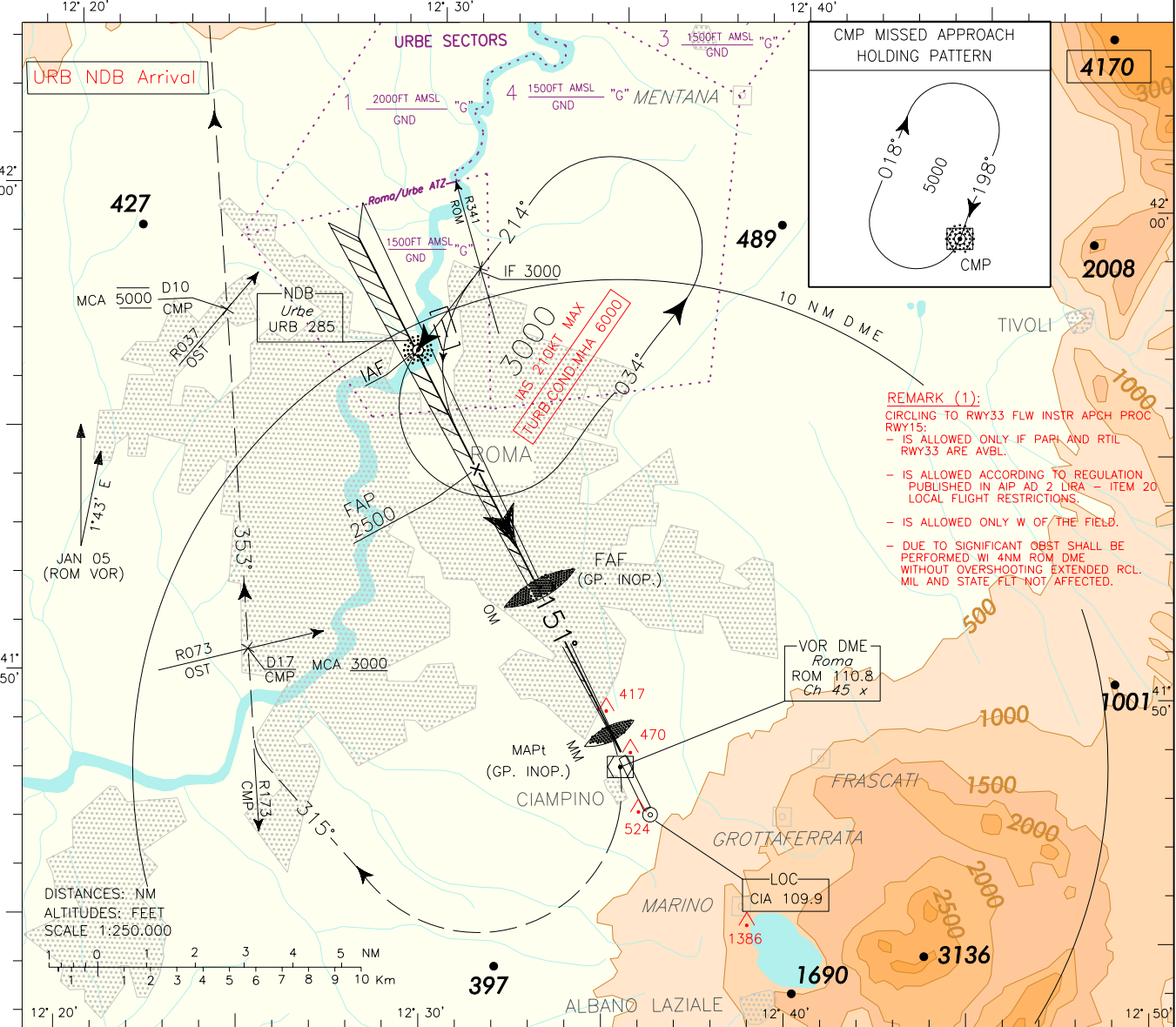
TWR Ciampino Tower
120.50
Ciampino Ground
121.75

AD ELEV
427

LIRA
ROMA/CIAMPINO
ILS or LOC-U RWY 15

DOC.8168-ED.4-1993-AMD 12

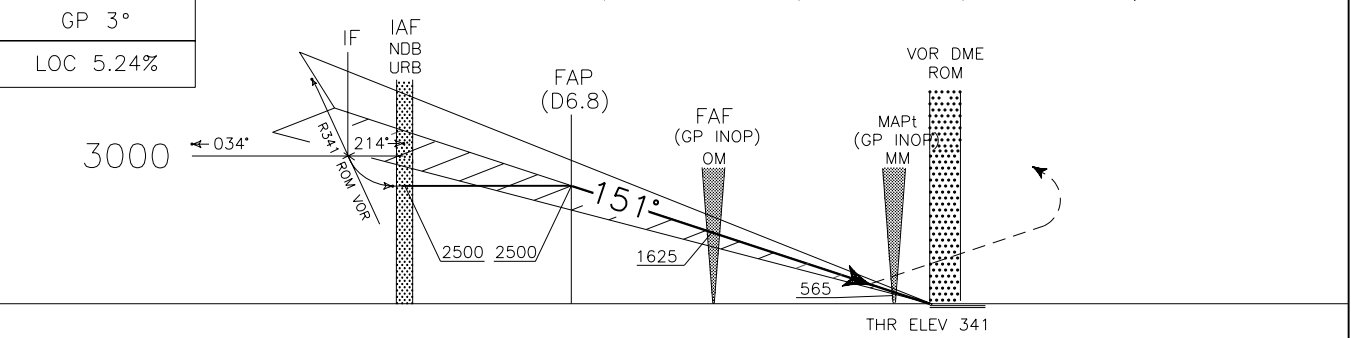
CHANGE: NEW AD SECTION



REMARK (1):
CIRCLING TO RWY33 FLW INSTR APCH PROC RWY15:
- IS ALLOWED ONLY IF PARL AND RTIL RWY33 ARE AVBL.
- IS ALLOWED ACCORDING TO REGULATION PUBLISHED IN AIP AD 2 LIRA - ITEM 20 LOCAL FLIGHT RESTRICTIONS.
- IS ALLOWED ONLY W OF THE FIELD.
- DUE TO SIGNIFICANT OBST SHALL BE PERFORMED WI 4NM ROM DME WITHOUT OVERSHOOTING EXTENDED RCL. MIL AND STATE FLT NOT AFFECTED.

TRANSITION ALT 6000 MISSED APPROACH: As soon as possible turn right (IAS MAX 185 during turn), on TR 315° to intercept and follow RDL 173 CMP VOR bound to CMP VOR DME climbing to 5000 Ft. Cross RDL 173/D17 CMP VOR DME (RDL 073 OST VOR) at 3000 Ft or above. Cross RDL 173/D10 CMP VOR DME (RDL 037 OST VOR) at 5000 Ft steady.

RDH 17.50 M
GP 3°
LOC 5.24%



THR ELEV 341

| ROM DME | | | | | ROM DME | | | | | | | |
|--|-----------|-----------|------------|------------|------------|-----|---------|---------|---------|------------|--------------|--|
| OCA (OCH) | A | B | C | D | FT PER MIN | GS | OM-MM | MM-THR | DME ROM | ALT(HGT) | MNM SECT ALT | |
| ILS CAT I | 700 (359) | 710 (369) | 720 (379) | 730 (389) | 425 | 80 | 3.33 NM | 0.52 NM | 6 | 2255(1914) | | |
| LOC | 750 (409) | | | | 530 | 100 | 2 : 30 | 0 : 23 | 5 | 1937(1596) | | |
| <p>WARNING: In case of GP INOP Timing not allowed for defining the MAPt.</p> | | | | | | | | | | | | |
| CIRCLING (1) | 1100(673) | 1200(773) | 1700(1273) | 1830(1403) | 635 | 120 | 1 : 40 | 0 : 16 | 3 | 1301(960) | | |
| | | | | | 745 | 140 | 1 : 26 | 0 : 13 | 2 | 983(642) | | |
| | | | | | 850 | 160 | 1 : 15 | 0 : 12 | 1 | 665(324) | | |

REMARK: RWY 15 traffic pattern right.

APP Roma Arrivals
Roma Director
119.20

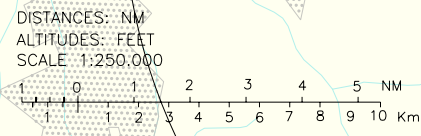
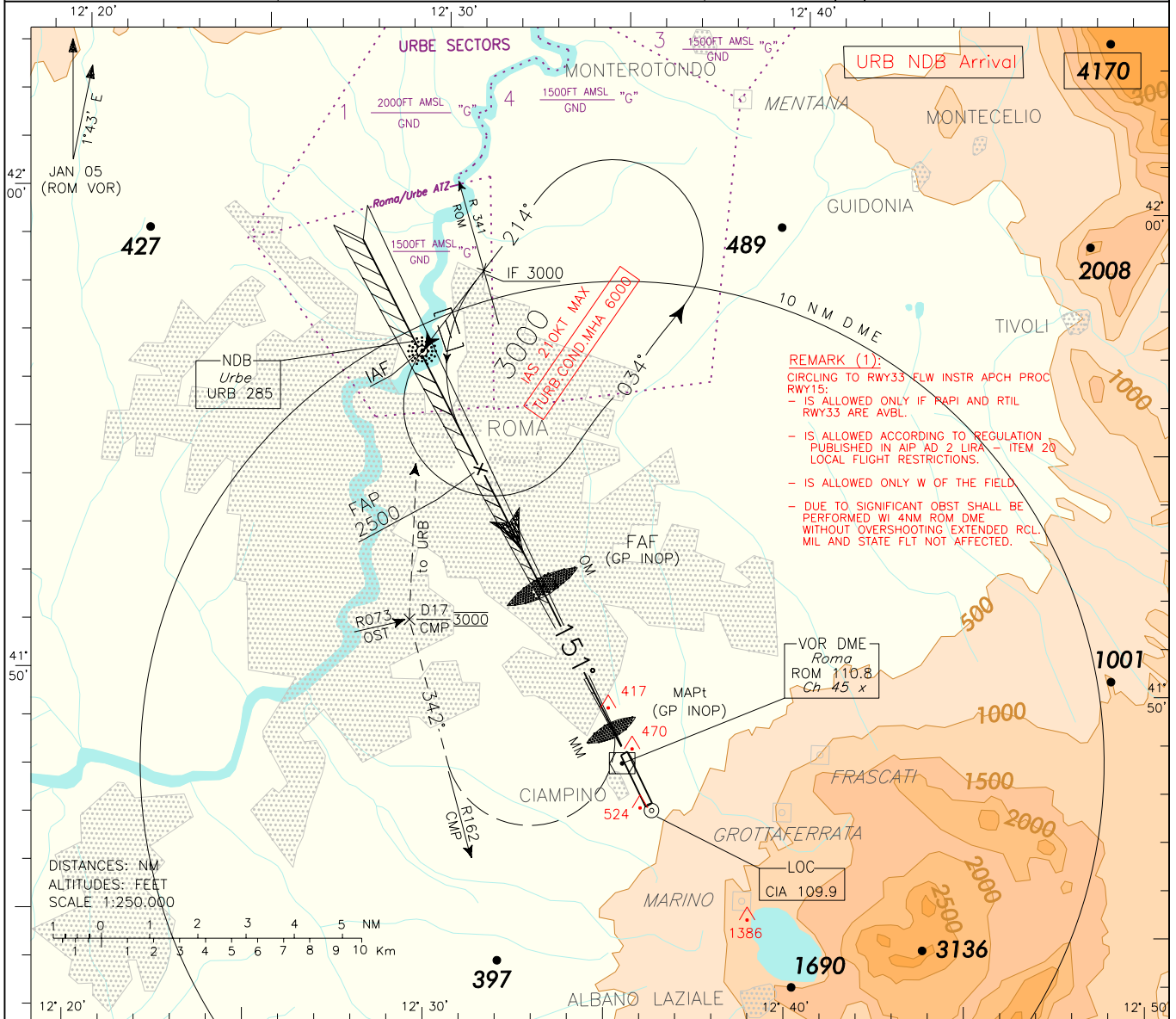
TWR Ciampino Tower
120.50
Ciampino Ground
121.75

AD ELEV
427

L I R A
ROMA/CIAMPINO
ILS or LOC-V RWY 15

DOC.8168-ED.4-1993-AMD 12

CHANGE: NEW AD SECTION



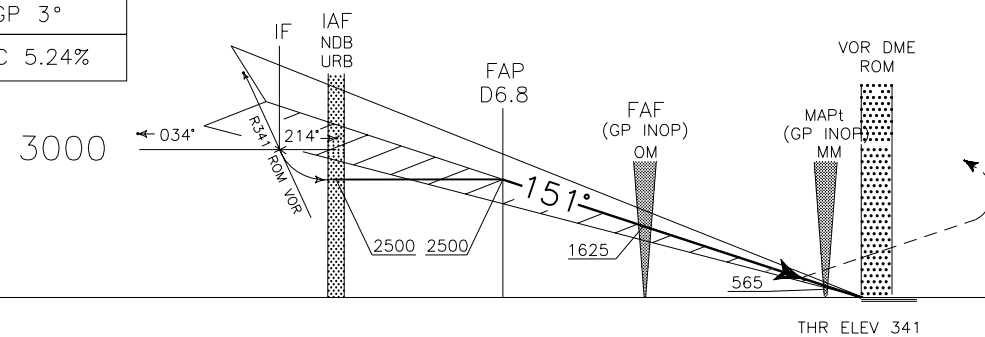
TRANSITION ALT 6000

MISSED APPROACH: As soon as possible turn right (IAS MAX 185 during turn) to join and follow RDL 162 CMP VOR (track 342°) climbing to 3000 Ft. At D17 CMP DME (RDL 073 OST VOR), to be reached at 3000 Ft steady, turn right inbound to URB NDB.

RDH 17.50 M

GP 3°

LOC 5.24%



ROM DME 16 15 14 13 12 11 10 9 8 7 6 5 4 3 2 1 0 1 2 3 4 5 6 7 ROM DME

| STRAIGHT IN APPROACH | OCA (OCH) | A B C D | | | | FT PER MIN | GS | OM-MM | MM-THR | DME ROM | ALT(HGT) | MNM SECT ALT |
|----------------------|--|-----------|-----------|------------|------------|------------|-----|--------|--------|---------|------------|--------------|
| | | ILS CAT I | 700 (359) | 710 (369) | 720 (379) | | | | | | | |
| LOC | | 750 (409) | | | | 425 | 80 | 2 : 30 | 0 : 23 | 5 | 1937(1596) | |
| WARNING: | In case of GP INOP timing not allowed for defining the MAPt. | | | | | | | | | | | |
| CIRCLING (1) | | 1100(673) | 1200(773) | 1700(1273) | 1830(1403) | 530 | 100 | 2 : 00 | 0 : 19 | 4 | 1619(1278) | |
| | | | | | | 635 | 120 | 1 : 40 | 0 : 16 | 3 | 1301(960) | |
| | | | | | | 745 | 140 | 1 : 26 | 0 : 13 | 2 | 983(642) | |
| | | | | | | 850 | 160 | 1 : 15 | 0 : 12 | 1 | 665(324) | |

REMARK: RWY 15 traffic pattern right.

APP Roma Arrivals
Roma Director
119.20

TWR Ciampino Tower
120.50
Ciampino Ground
121.75

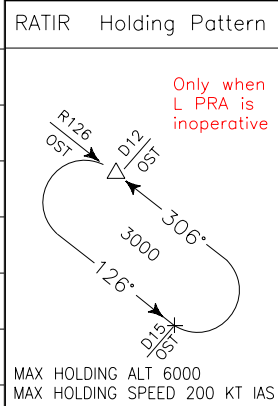
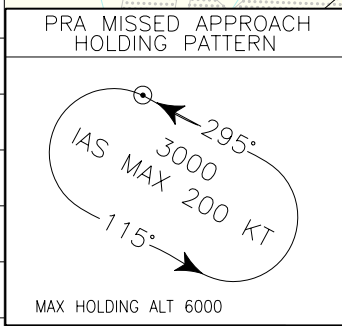
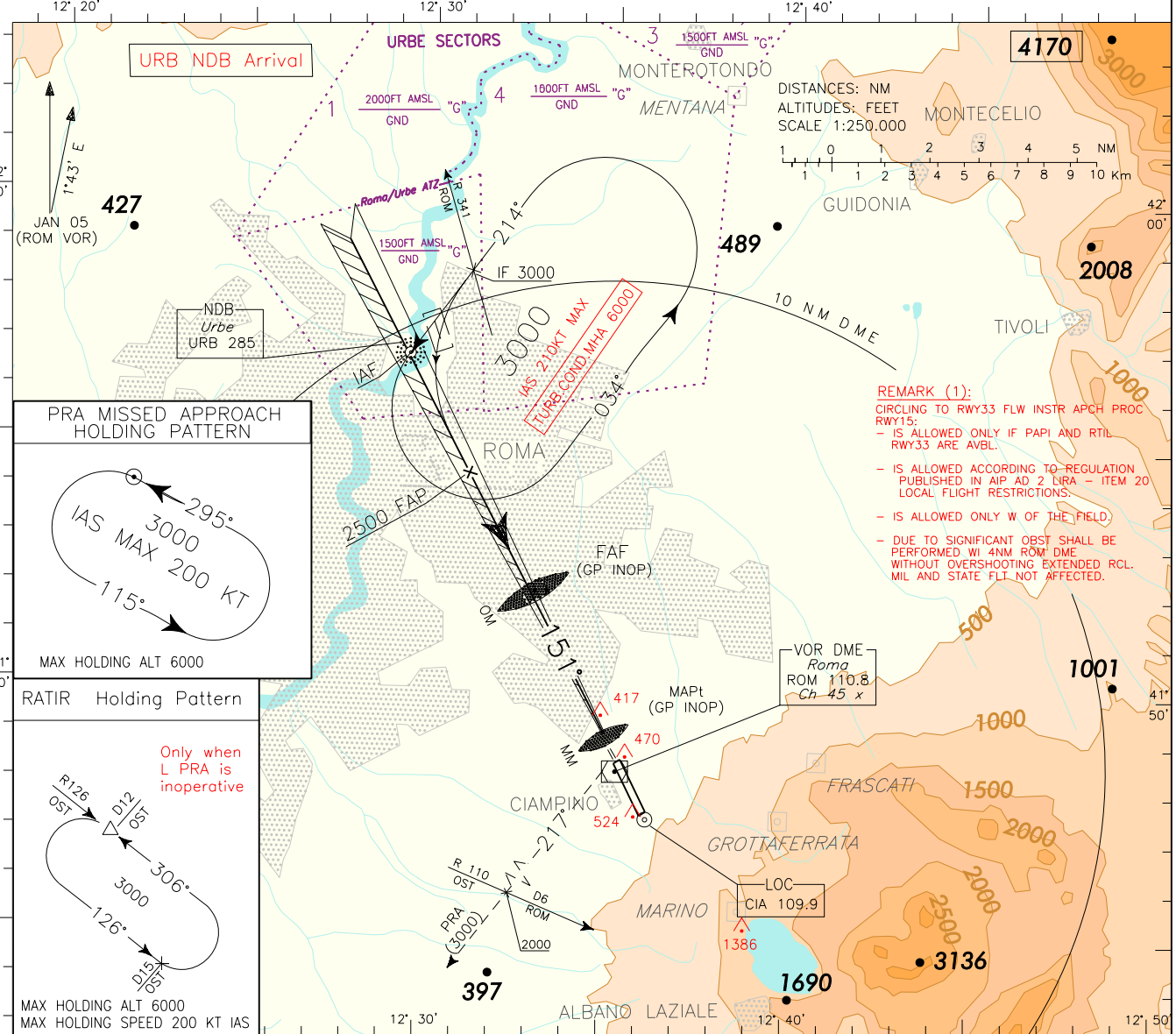
AD ELEV
427

L
I
R
A

ROMA/CIAMPINO
ILS or LOC-W RWY 15

DOC.8168-ED.4-1993-AMD 12

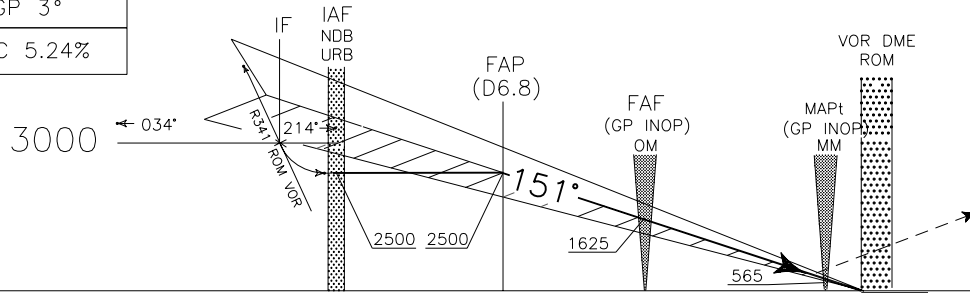
CHANGE: NEW AD SECTION



REMARK (1):
CIRCLING TO RWY33 FLW INSTR APCH PROC RWY15:
- IS ALLOWED ONLY IF PAPI AND RTIL RWY33 ARE AVBL.
- IS ALLOWED ACCORDING TO REGULATION PUBLISHED IN AIP AD 2 LIRA - ITEM 20 LOCAL FLIGHT RESTRICTIONS.
- IS ALLOWED ONLY W OF THE FIELD.
- DUE TO SIGNIFICANT OBST SHALL BE PERFORMED WI 4NM ROM DME WITHOUT OVERSHOOTING EXTENDED RCL. MIL AND STATE FLT NOT AFFECTED.

TRANSITION ALT 6000 MISSED APPROACH: As soon as possible turn right (IAS MAX 185 KTS) on RDL 217 ROM VOR/QDR 037° PRA L to PRA L or RATIR in case of PRA L inoperative. Cross D6 (RDL/QDR 110 OST VOR/NDB) at 2000 Ft or above, PRA L/RATIR at 3000ft.

RDH 17.50 M
GP 3°
LOC 5.24%



ROM DME scale from 16 to 7.

| STRAIGHT IN APPROACH | OCA (OCH) | | | | FT PER MIN | GS | OM-MM | MM-THR | DME ROM | ALT(HGT) | MNM SECT ALT |
|----------------------|--|-----------|------------|------------|------------|-----|---------|---------|---------|------------|--------------|
| | A | B | C | D | | | | | | | |
| ILS CAT I | 700 (359) | 710 (369) | 720 (379) | 730 (389) | 425 | 80 | 3.33 NM | 0.52 NM | 6 | 2255(1914) | |
| LOC | 750 (409) | | | | 530 | 100 | 2 : 00 | 0 : 19 | 4 | 1619(1278) | |
| WARNING: | In case of GP INOP Timing not allowed for defining the MAPt. | | | | 635 | 120 | 1 : 40 | 0 : 16 | 3 | 1301(960) | |
| | | | | | 745 | 140 | 1 : 26 | 0 : 13 | 2 | 983(642) | |
| CIRCLING (1) | 1100(673) | 1200(773) | 1700(1273) | 1830(1403) | 850 | 160 | 1 : 15 | 0 : 12 | 1 | 665(324) | |

ICAO - INSTRUMENT APPROACH CHART

AD 2 LIRA 5-9

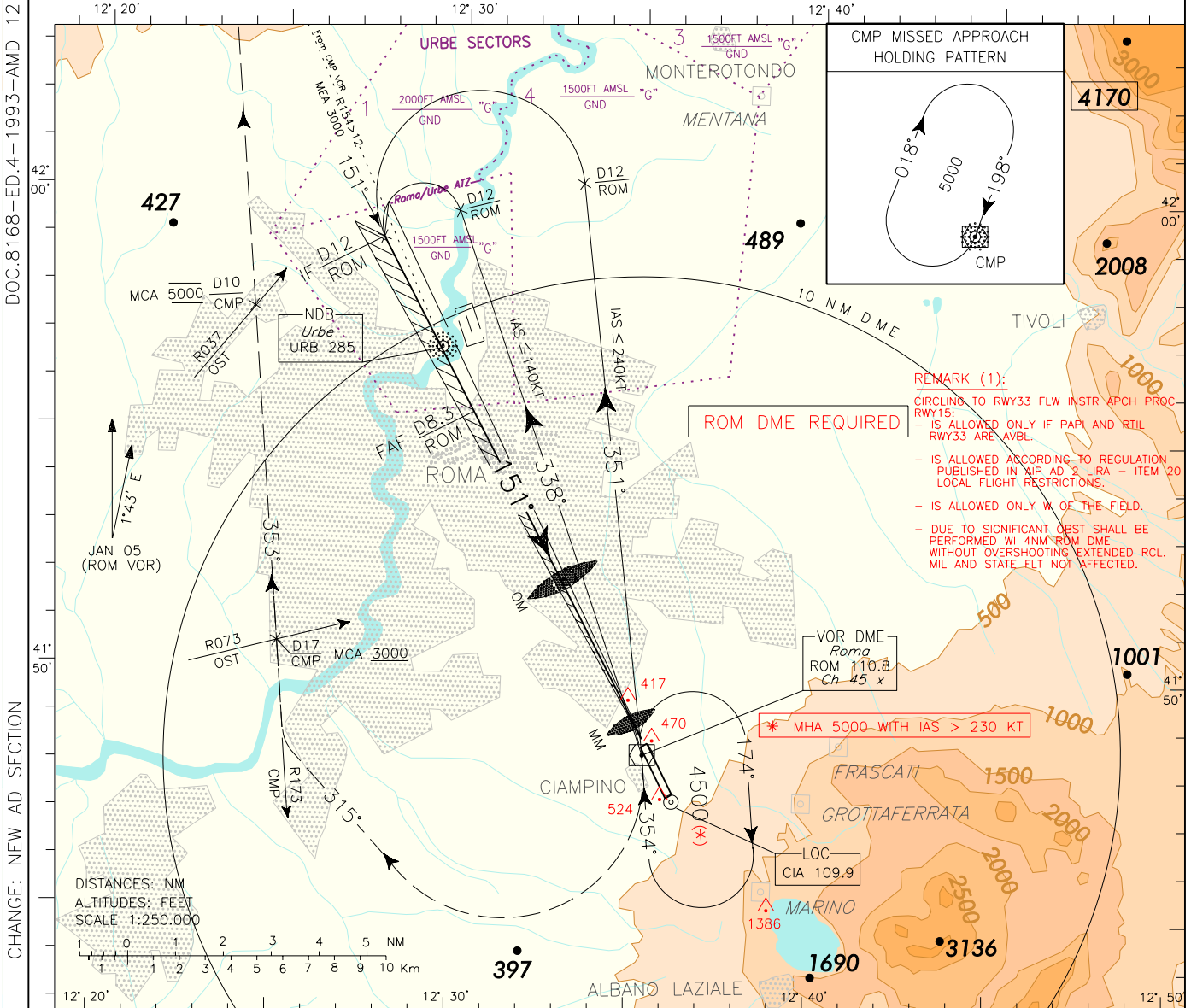
REMARK: RWY 15 traffic pattern right.

APP Roma Arrivals
Roma Director 119.20
TWR Ciampino Tower 120.50
Ciampino Ground 121.75

AD ELEV 427

LIRA

ROMA/CIAMPINO
ILS or LOC-X RWY 15

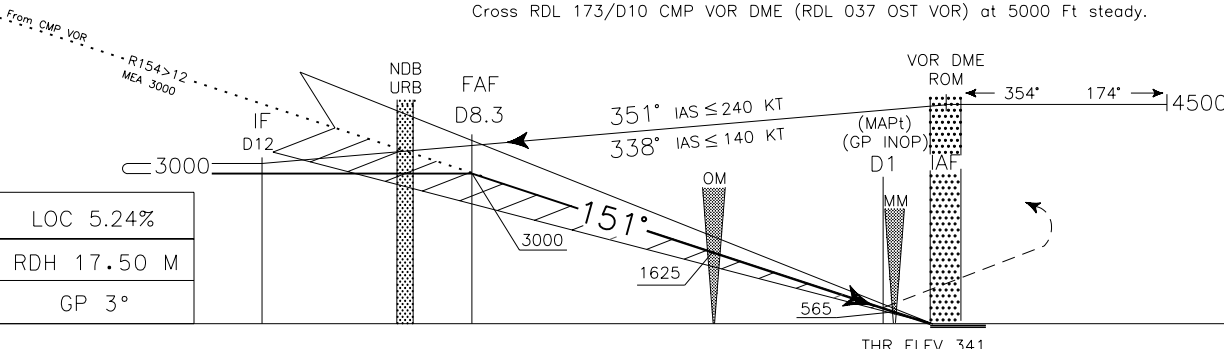


DOC.8168-ED.4-1993-AMD 12

CHANGE: NEW AD SECTION

TRANSITION ALT 6000

MISSED APPROACH: As soon as possible turn right (IAS MAX 185 during turn), on TR 315° to intercept and follow RDL 173 CMP VOR bound to CMP VOR DME climbing to 5000 Ft. Cross RDL 173/D17 CMP VOR DME (RDL 073 OST VOR) at 3000 Ft or above. Cross RDL 173/D10 CMP VOR DME (RDL 037 OST VOR) at 5000 Ft steady.



| | | | | | | | | | | | | | | | | | | | | | | | |
|---------|----|----|----|----|---------|----|---|---|---|---|---|---|---|---|---|---|---|---|---|---|---|---|---|
| ROM DME | | | | | ROM DME | | | | | | | | | | | | | | | | | | |
| 16 | 15 | 14 | 13 | 12 | 11 | 10 | 9 | 8 | 7 | 6 | 5 | 4 | 3 | 2 | 1 | 0 | 1 | 2 | 3 | 4 | 5 | 6 | 7 |

| STRAIGHT IN APPROACH | OCA (OCH) | A B C D | | | | FT PER MIN | GS | OM-MM | MM-THR | DME ROM | ALT(HGT) | MNM SECT ALT |
|----------------------|--|-----------|------------|------------|-----------|------------|--------|--------|--------|------------|------------|--------------|
| | | ILS CAT I | 700 (359) | 710 (369) | 720 (379) | | | | | | | |
| LOC | | 750 (409) | | | | 425 | 80 | 2 : 30 | 0 : 23 | 5 | 1937(1596) | |
| WARNING: | In case of GP INOP Timing not allowed for defining the MAPt. | | | | | | | | | | | |
| CIRCLING (1) | 1100(673) | 1200(773) | 1700(1273) | 1830(1403) | 530 | 100 | 2 : 00 | 0 : 19 | 4 | 1619(1278) | | |
| | | | | | 635 | 120 | 1 : 40 | 0 : 16 | 3 | 1301(960) | | |
| | | | | | 745 | 140 | 1 : 26 | 0 : 13 | 2 | 983(642) | | |
| | | | | | 850 | 160 | 1 : 15 | 0 : 12 | 1 | 665(324) | | |

REMARK: RWY 15 traffic pattern right.

APP Roma Arrivals
Roma Director
119.20

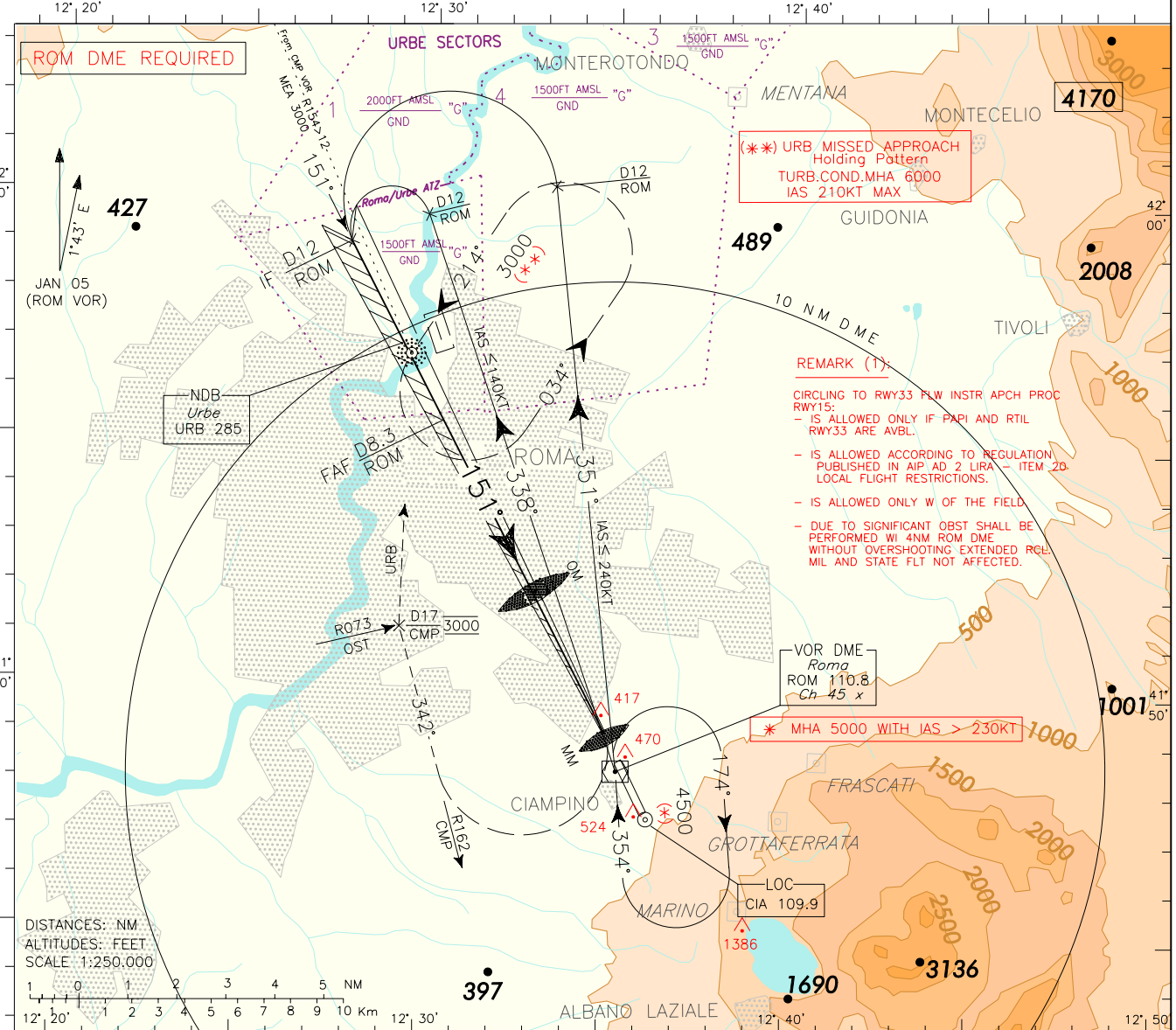
TWR Ciampino Tower
120.50
Ciampino Ground
121.75

AD ELEV
427

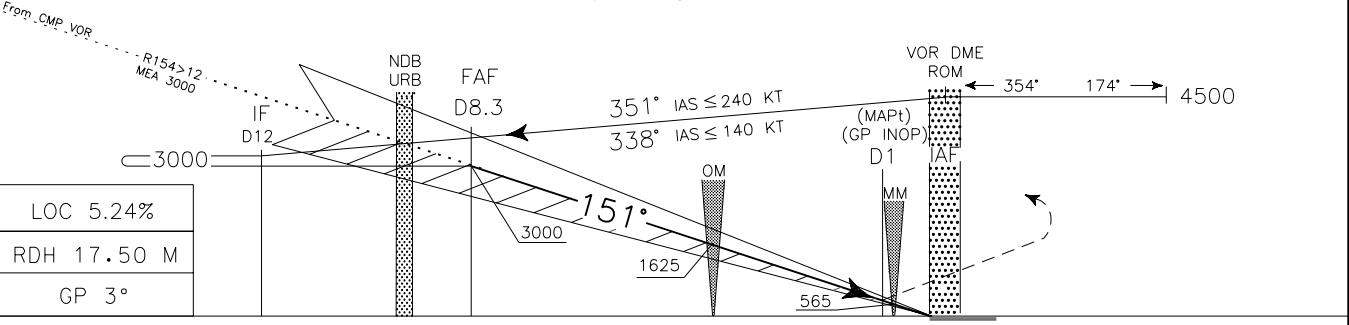
L I R A
ROMA/CIAMPINO
ILS or LOC-Y RWY 15

DOC.8168-ED.4-1993-AMD 12

CHANGE: NEW AD SECTION



TRANSITION ALT 6000 MISSED APPROACH: As soon as possible turn right (IAS MAX 185 during turn) to join and follow RDL 162 CMP VOR (track 342°) climbing to 3000 Ft. At D17 CMP DME (RDL 073 OST VOR), to be reached at 3000 Ft steady, turn right inbound to URB NDB.



| | | | | | | | | | | | |
|--------------|--|-----------|------------|------------|------------|-----|---------|---------|---------|------------|--------------|
| ROM DME | | | | | ROM DME | | | | | | |
| OCA (OCH) | A | B | C | D | FT PER MIN | GS | OM-MM | MM-THR | DME ROM | ALT(HGT) | MNM SECT ALT |
| ILS CAT I | 700 (359) | 710 (369) | 720 (379) | 730 (389) | 425 | 80 | 3.33 NM | 0.52 NM | 6 | 2255(1914) | |
| LOC | 750 (409) | | | | 530 | 100 | 2 : 30 | 0 : 23 | 5 | 1937(1596) | |
| WARNING: | In case of GP INOP Timing not allowed for defining the MAPt. | | | | 635 | 120 | 1 : 40 | 0 : 16 | 3 | 1301(960) | |
| CIRCLING (1) | 1100(673) | 1200(773) | 1700(1273) | 1830(1403) | 745 | 140 | 1 : 26 | 0 : 13 | 2 | 983(642) | |
| | | | | | 850 | 160 | 1 : 15 | 0 : 12 | 1 | 665(324) | |

| | | |
|-----------|-------------|-------|
| LOC 5.24% | RDH 17.50 M | GP 3° |
|-----------|-------------|-------|

ICAO - INSTRUMENT APPROACH CHART

AD 2 LIRA 5-13

REMARK: RWY 15 traffic pattern right.

APP Roma Arrivals
Roma Director
119.20

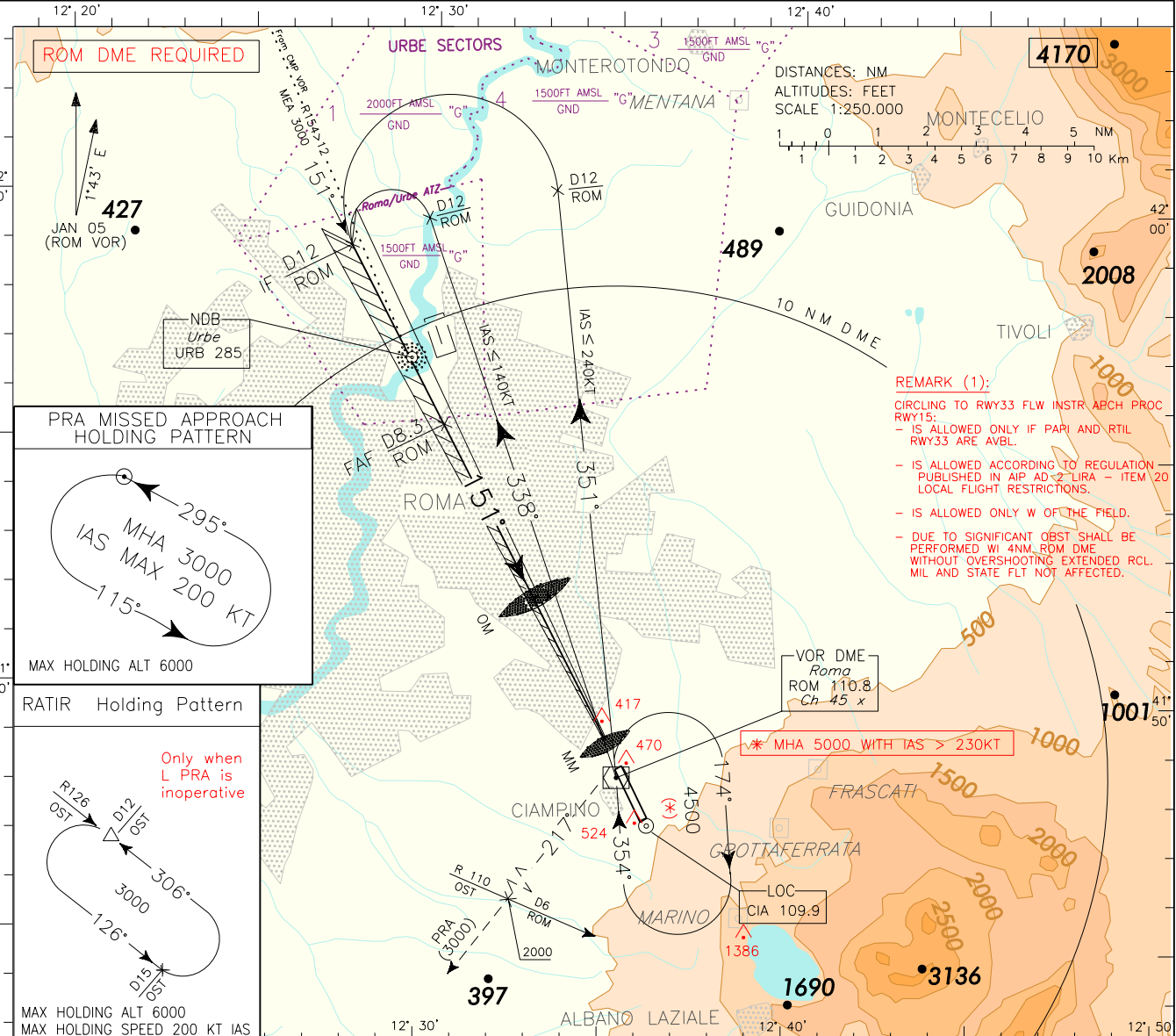
TWR Ciampino Tower
120.50
Ciampino Ground
121.75

AD ELEV 427

L I R A ROMA/CIAMPINO
ILS or LOC-Z RWY 15

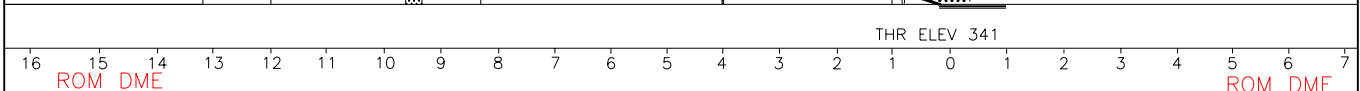
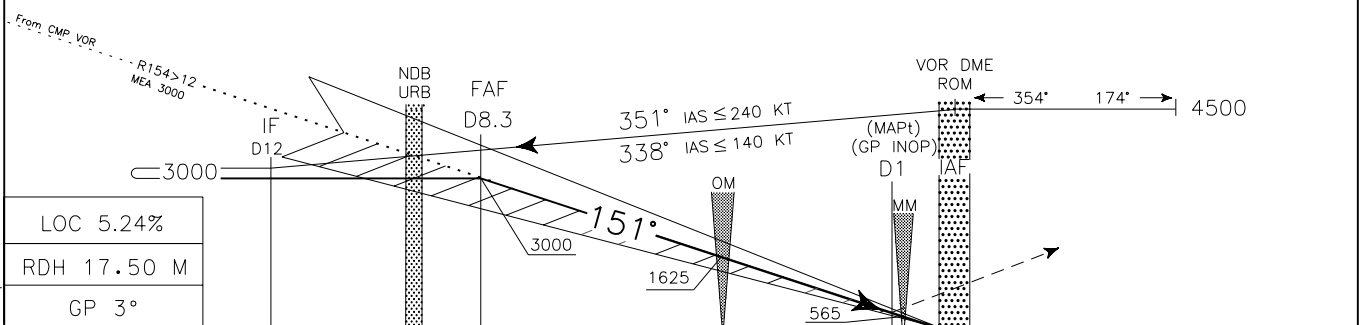
DOC.8168-ED.4-1993-AMD 12

CHANGE: NEW AD SECTION

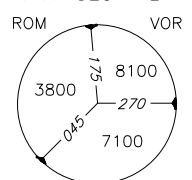


TRANSITION ALT 6000

MISSED APPROACH: As soon as possible turn right (IAS MAX 185 KTS) on RDL 217 ROM VOR to PRA L or RATIR in case of PRA L inoperative. Cross D6 (RDL/QDR 110 OST VOR/NDB) at 2000 Ft or above, PRA L/RATIR at 3000 Ft.



| STRAIGHT IN APPROACH | OCA (OCH) | A | B | C | D | FT PER MIN | GS | OM-THR | | DME ROM | ALT(HGT) | MNM SECT ALT |
|----------------------|-----------|-----------|------------|------------|---|------------|-----|---------|---------|---------|------------|--------------|
| | | | | | | | | 3.33 NM | 0.52 NM | | | |
| ILS CAT I | 700 (359) | 710 (369) | 720 (379) | 730 (389) | | 425 | 80 | 2 : 30 | 0 : 23 | 5 | 2255(1914) | ROM |
| | | | | | | | | 2 : 00 | 0 : 19 | 4 | 1619(1278) | |
| LOC | | 750 (409) | | | | 530 | 100 | 1 : 40 | 0 : 16 | 3 | 1301(960) | VOR |
| | | | | | | | | 1 : 26 | 0 : 13 | 2 | 983(642) | |
| CIRCLING (1) | 1100(673) | 1200(773) | 1700(1273) | 1830(1403) | | 850 | 160 | 1 : 15 | 0 : 12 | 1 | 665(324) | |



ICAO - INSTRUMENT APPROACH CHART

AD 2 LIRA 5-15

REMARK: RWY 15 traffic pattern right.

APP Roma Arrivals
Roma Director
119.20

TWR Ciampino Tower
120.50
Ciampino Ground
121.75

AD ELEV
427

L
I
R
A

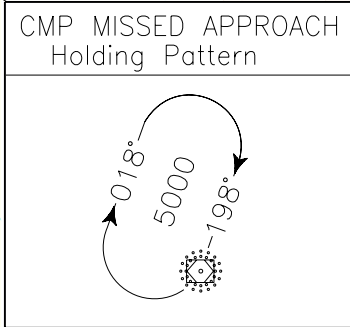
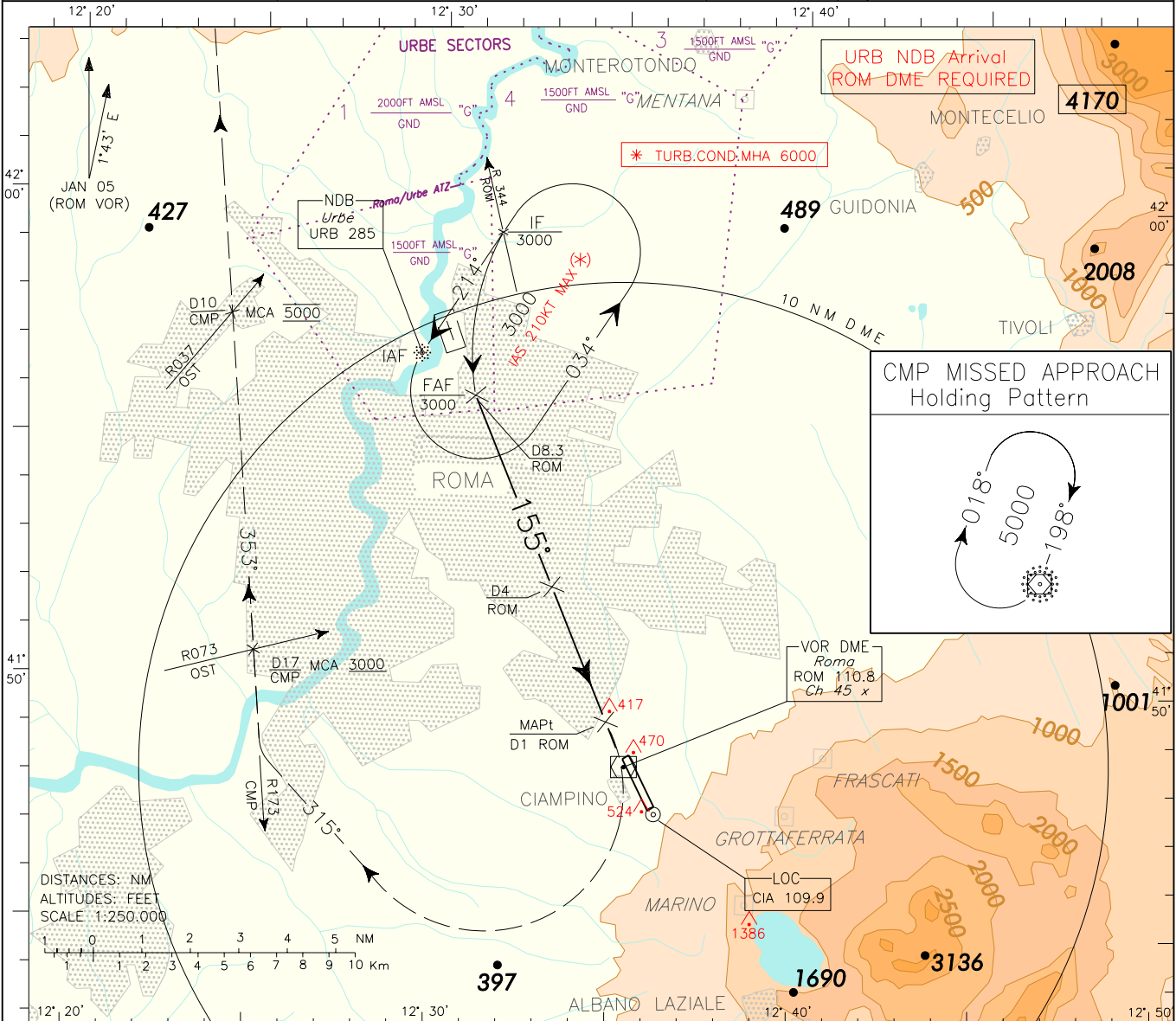
ROMA/CIAMPINO

VOR-U

RWY 15

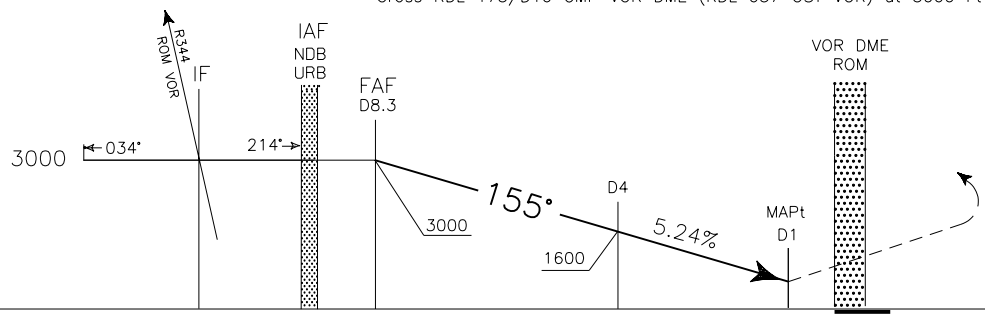
DOC.8168-ED.4-1993-AMD 12

CHANGE: NEW AD SECTION



TRANSITION ALT 6000

MISSED APPROACH: As soon as possible turn right (IAS MAX 185 during turn), on TR 315° to intercept and follow RDL 173/D17 CMP VOR bound to CMP VOR DME climbing to 5000 Ft. Cross RDL 173/D17 CMP VOR DME (RDL 073 OST VOR) at 3000 Ft or above. Cross RDL 173/D10 CMP VOR DME (RDL 037 OST VOR) at 5000 Ft steady.

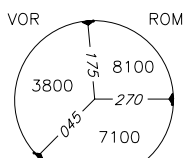


THR ELEV 341

ROM DME

ROM DME

| OCA (OCH) | | A | B | C | D | REMARK (1): CIRCLING TO RWY33 FLW INSTR APCH PROC RWY15: - IS ALLOWED ONLY IF PAPI AND RTIL RWY33 ARE AVBL. - IS ALLOWED ACCORDING TO REGULATION PUBLISHED IN AIP AD 2 LIRA - ITEM 20 LOCAL FLIGHT RESTRICTIONS. - IS ALLOWED ONLY W OF THE FIELD. - DUE TO SIGNIFICANT OBST SHALL BE PERFORMED W/ 4NM ROM DME WITHOUT OVERSHOOTING EXTENDED RCL. MIL AND STATE FLT NOT AFFECTED. | FT PER MIN | GS | FAF MAPt | DIST | ALT(HGT) | MNM SECT ALT |
|----------------------|-----|---|-----------|------------|------------|--|------------|-----|----------|------|------------|--------------|
| STRAIGHT IN APPROACH | VOR | 750 (409) | | | | | | 425 | 80 | 7NM | 7DME | 2564(2223) |
| | | WARNING: TIMING NOT ALLOWED FOR DEFFINING MAPt | | | | | 531 | 100 | 4:11 | 5DME | 1928(1587) | ROM |
| | | | | | | | 637 | 120 | 3:30 | 4DME | 1610(1269) | |
| | | | | | | | 743 | 140 | 3:00 | 3DME | 1292(951) | |
| CIRCLING (1) | | 1100(673) | 1200(773) | 1700(1273) | 1830(1403) | | 849 | 160 | 2:37 | 2DME | 974(633) | |



ICAO - INSTRUMENT APPROACH CHART

AD 2 LIRA 5-17

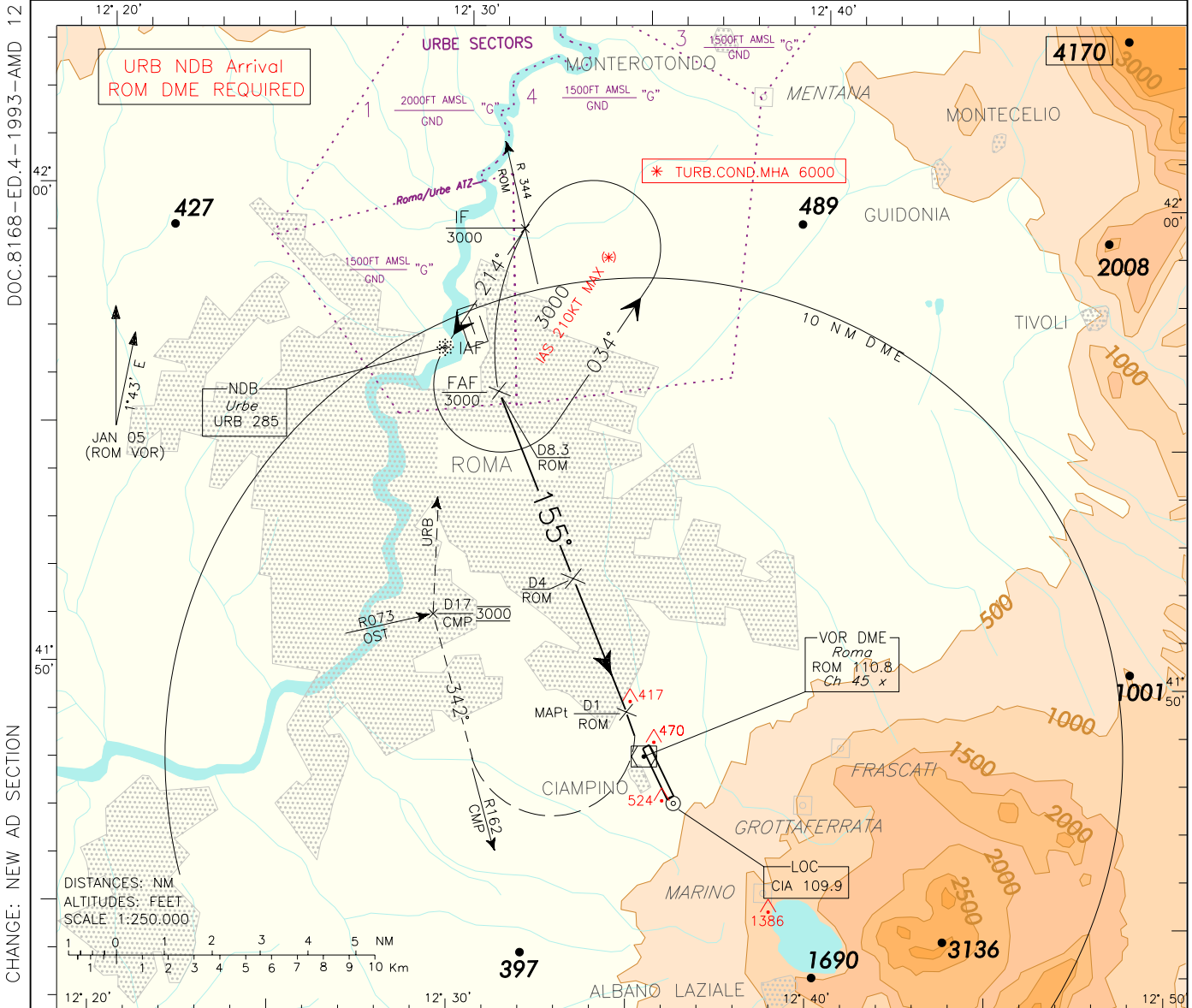
REMARK: RWY 15
traffic pattern right.

APP Roma Arrivals
Roma Director
119.20

TWR Ciampino Tower
120.50
Ciampino Ground
121.75

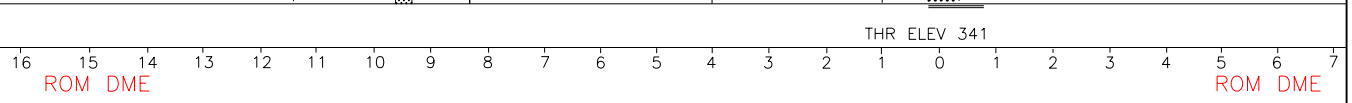
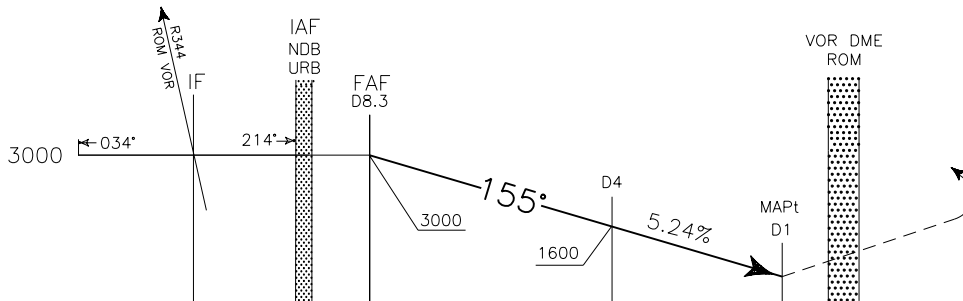
AD ELEV
427

LIRA
ROMA/CIAMPINO
VOR-V
RWY 15



TRANSITION ALT 6000

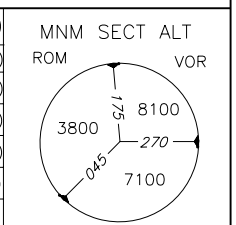
MISSED APPROACH: As soon as possible turn right (IAS MAX 185 during turn) to join and follow RDL 162 CMP VOR (track 342°) climbing to 3000 Ft. At D17 CMP DME (RDL 073 OST VOR), to be reached at 3000 Ft steady, turn right inbound to URB NDB.



| OCA (OCH) | A | B | C | D |
|---|-----------|-----------|------------|------------|
| STRAIGHT IN APPROACH | VOR | 750 (409) | | |
| <p>WARNING: TIMING NOT ALLOWED FOR DEFFINING MAPt</p> | | | | |
| CIRCLING (1) | 1100(673) | 1200(773) | 1700(1273) | 1830(1403) |

REMARK (1):
CIRCLING TO RWY33 FLW INSTR APCH PROC RWY15:
- IS ALLOWED ONLY IF PAPI AND RTIL RWY33 ARE AVBL.
- IS ALLOWED ACCORDING TO REGULATION PUBLISHED IN AIP AD 2 LIRA - ITEM 20 LOCAL FLIGHT RESTRICTIONS.
- IS ALLOWED ONLY W OF THE FIELD.
- DUE TO SIGNIFICANT OBST SHALL BE PERFORMED W/ 4NM ROM DME WITHOUT OVSERSHOOTING EXTENDED RCL. MIL AND STATE FLT NOT AFFECTED.

| FT PER MIN | GS | FAF MAPt 7NM | DIST 7DME | ALT(HGT) 2564(2223) |
|------------|-----|--------------|-----------|---------------------|
| 424 | 80 | 5:15 | 6DME | 2246(1905) |
| 531 | 100 | 4:11 | 5DME | 1928(1587) |
| 637 | 120 | 3:30 | 4DME | 1610(1269) |
| 743 | 140 | 3:00 | 3DME | 1292(951) |
| 849 | 160 | 2:37 | 2DME | 974(633) |



ICAO - INSTRUMENT APPROACH CHART

AD 2 LIRA 5-19

REMARK: RWY 15 traffic pattern right.

APP Roma Arrivals
Roma Director
119.20

TWR Ciampino Tower
120.50
Ciampino Ground
121.75

AD ELEV
427

L
I
R
A

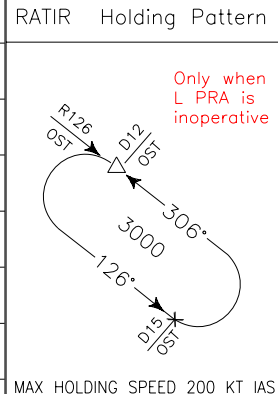
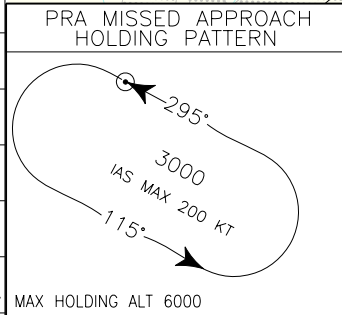
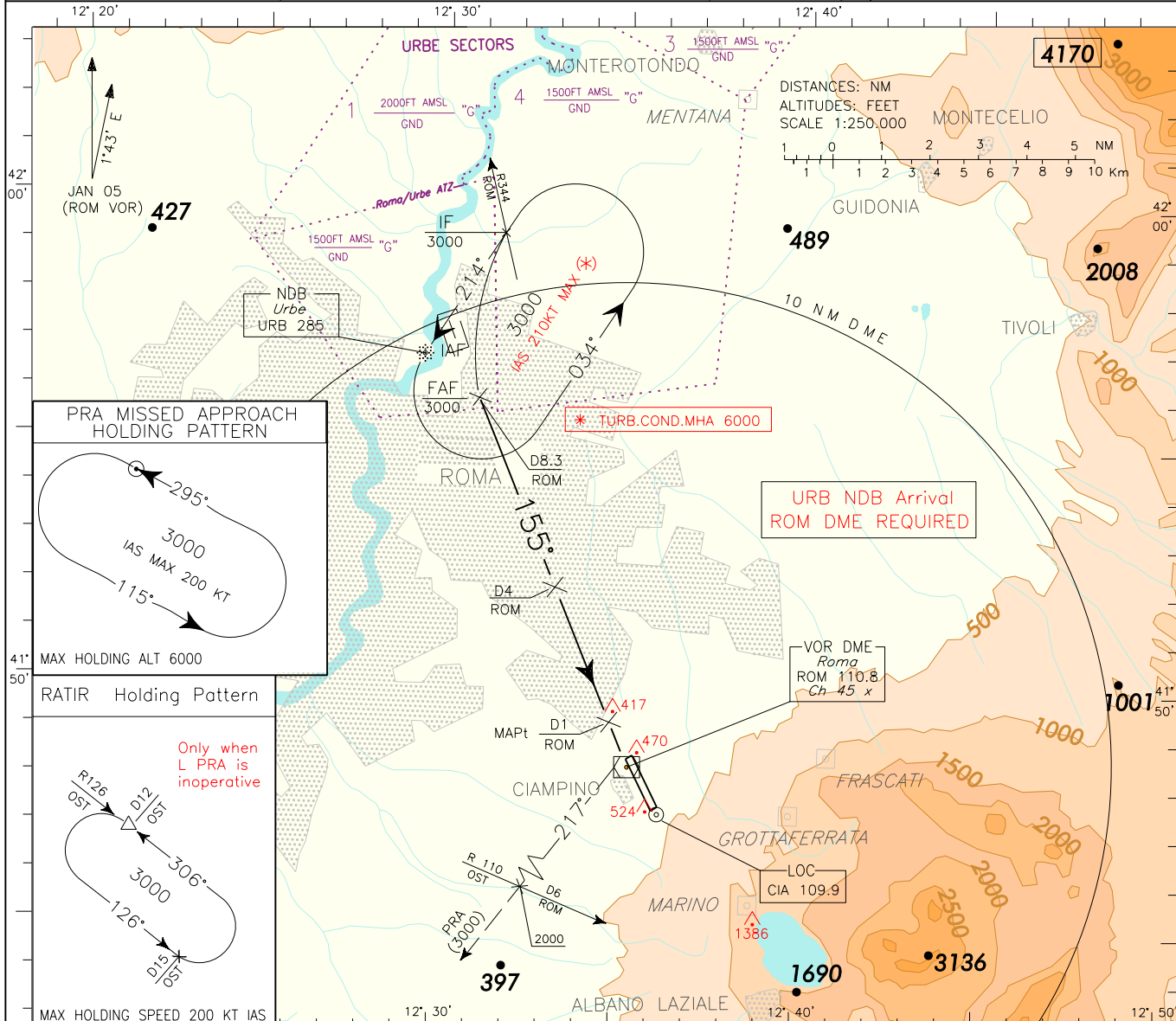
ROMA/CIAMPINO

VOR-W

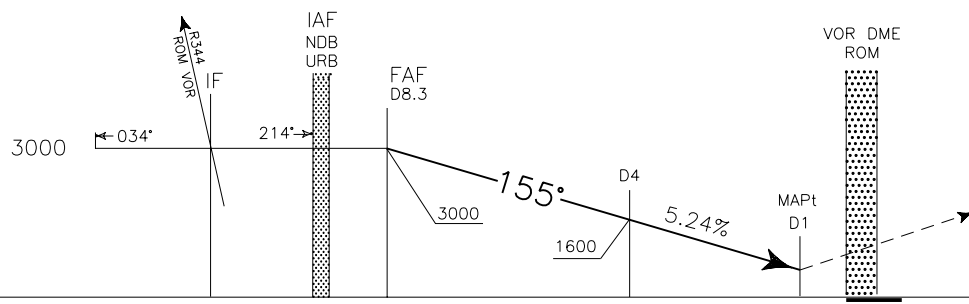
RWY 15

DOC.8168-ED.4-1993-AMD 12

CHANGE: NEW AD SECTION



TRANSITION ALT 6000 MISSED APPROACH: As soon as possible turn right (IAS MAX 185 KTS) on RDL 217 ROM VOR to PRA L or RATIR in case of PRA L inoperative. Cross D6 (RDL/QDR 110 OST VOR/NDB) at 2000 Ft or above, PRA L/RATIR at 3000 Ft.



| | | | | | | | | | | | | | | | | | | | | | | | |
|---------|----|----|----|---------|----|----|---|---|---|---|---|---|---|---|---|---|---|---|---|---|---|---|---|
| ROM DME | | | | ROM DME | | | | | | | | | | | | | | | | | | | |
| 16 | 15 | 14 | 13 | 12 | 11 | 10 | 9 | 8 | 7 | 6 | 5 | 4 | 3 | 2 | 1 | 0 | 1 | 2 | 3 | 4 | 5 | 6 | 7 |

| OCA (OCH) | A | B | C | D | REMARK (1): CIRCLING TO RWY33 FLW INSTR APCH PROC RWY15: - IS ALLOWED ONLY IF PAPI AND RTIL RWY33 ARE AVBL. - IS ALLOWED ACCORDING TO REGULATION PUBLISHED IN AIP AD 2 LIRA - ITEM 20 LOCAL FLIGHT RESTRICTIONS. - IS ALLOWED ONLY W OF THE FIELD. - DUE TO SIGNIFICANT OBST SHALL BE PERFORMED WI 4NM ROM DME WITHOUT OVERSHOOTING EXTENDED RCL. MIL AND STATE FLT NOT AFFECTED. | FT PER MIN | GS | FAF MAPt | DIST | ALT (HGT) | MNM SECT ALT ROM VOR |
|---|-----------|---|---|---|--|------------|-----|----------|------|-------------|-------------------------|
| STRAIGHT IN APPROACH | 750 (409) | | | | | | 425 | 80 | 5:15 | 7NM | |
| WARNING: TIMING NOT ALLOWED FOR DEFFINING MAPt | | | | | | 531 | 100 | 4:11 | 5DME | 1928 (1587) | |
| | | | | | | 637 | 120 | 3:30 | 4DME | 1610 (1269) | |
| | | | | | | 743 | 140 | 3:00 | 3DME | 1292 (951) | |
| CIRCLING (1) | | | | | | 849 | 160 | 2:37 | 2DME | 974 (633) | |

ICAO - INSTRUMENT APPROACH CHART

AD 2 LIRA 5-21

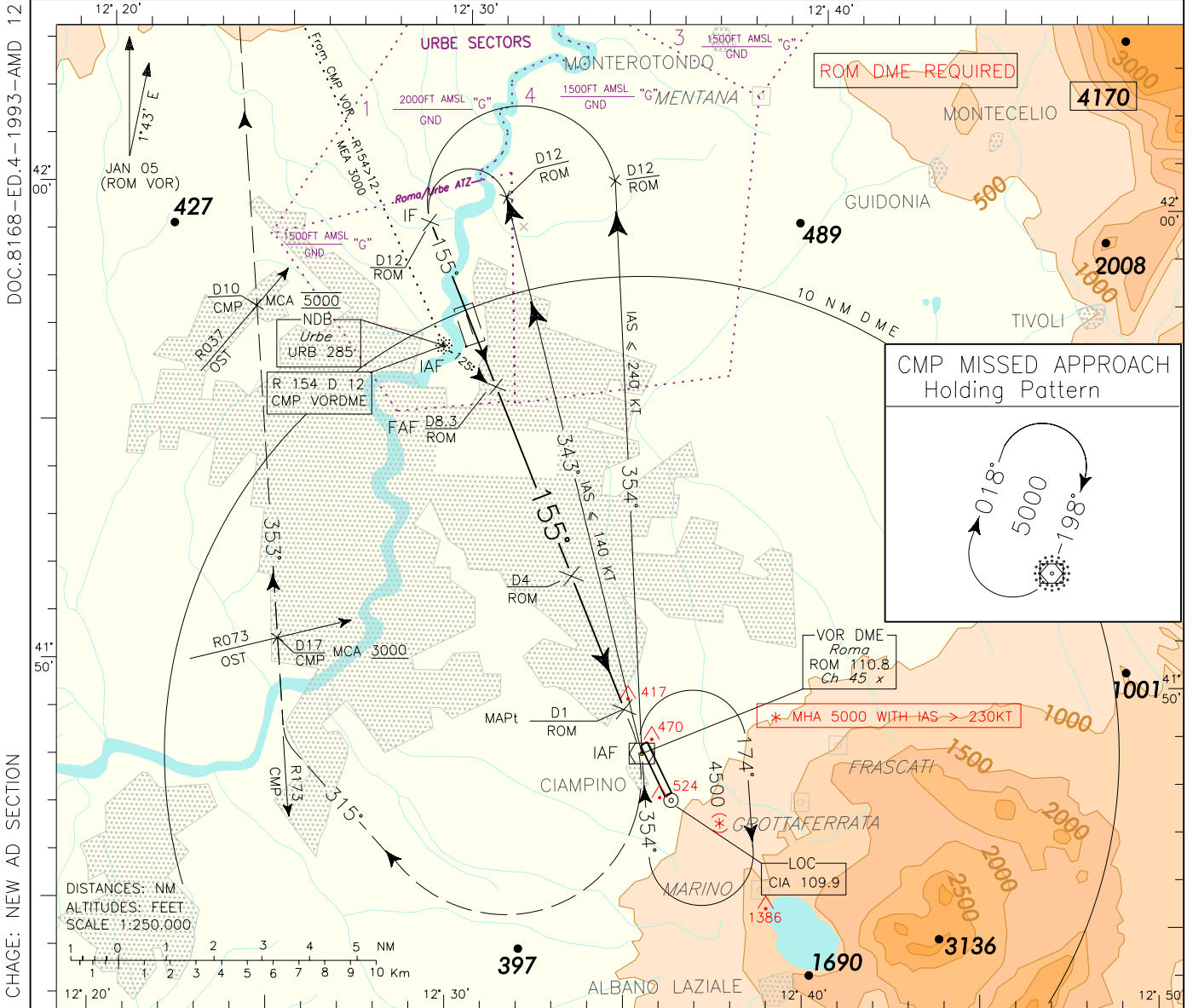
REMARK: RWY 15 traffic pattern right.

APP Roma Arrivals
Roma Director
119.20

TWR Ciampino Tower
120.50
Ciampino Ground
121.75

AD ELEV
427

LIRA
ROMA/CIAMPINO
VOR-X RWY 15

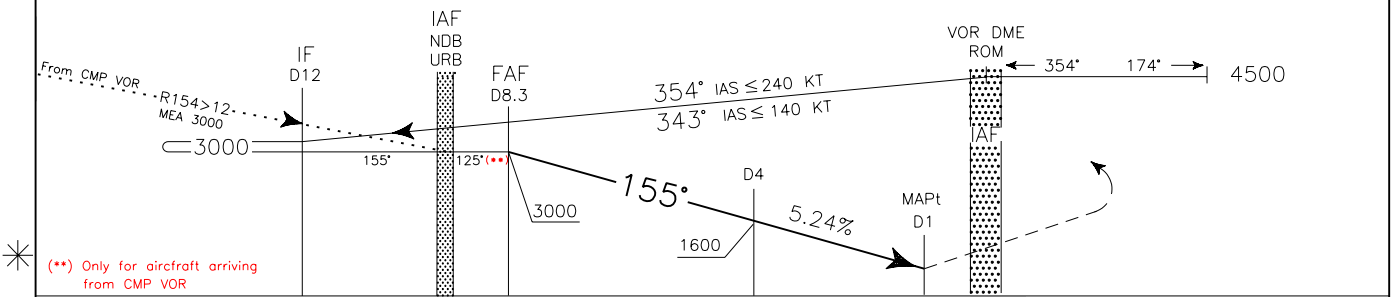


DOC.8168-ED.4-1993-AMD 12

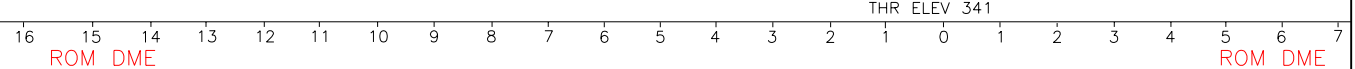
CHAGE: NEW AD SECTION

TRANSITION ALT 6000

MISSED APPROACH: As soon as possible turn right (IAS MAX 185 during turn), on TR 315° to intercept and follow RDL 173 CMP VOR bound to CMP VOR DME climbing to 5000 Ft. Cross RDL 173/D17 CMP VOR DME (RDL 073 OST VOR) at 3000 Ft or above. Cross RDL 173/D10 CMP VOR DME (RDL 037 OST VOR) at 5000 Ft steady.



(**) Only for aircraft arriving from CMP VOR

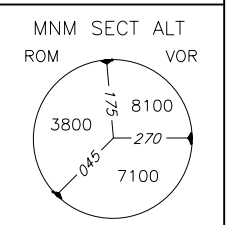


| OCA (OCH) | A | B | C | D |
|--|-----------|-----------|------------|------------|
| STRAIGHT IN APPROACH | VOR | 750 (409) | | |
| WARNING: TIMING NOT ALLOWED FOR DEFFINING MAPt | | | | |
| CIRCLING (1) | 1100(673) | 1200(773) | 1700(1273) | 1830(1403) |

REMARK (1): CIRCLING TO RWY33 FLW INSTR APCH PROC RWY15:

- IS ALLOWED ONLY IF PAPI AND RTIL RWY33 ARE AVBL.
- IS ALLOWED ACCORDING TO REGULATION PUBLISHED IN AIP AD 2 LIRA - ITEM 20 LOCAL FLIGHT RESTRICTIONS.
- IS ALLOWED ONLY W OF THE FIELD.
- DUE TO SIGNIFICANT OBST SHALL BE PERFORMED W/ 4NM ROM DME WITHOUT OVERSHOOTING EXTENDED RCL. MIL AND STATE FLT NOT AFFECTED.

| FT PER MIN | GS | FAF MAPt 7NM | DIST 7DME | ALT(HGT) 2564(2223) |
|------------|-----|--------------|-----------|---------------------|
| 425 | 80 | 5:15 | 6DME | 2246(1905) |
| 531 | 100 | 4:11 | 5DME | 1928(1587) |
| 637 | 120 | 3:30 | 4DME | 1610(1269) |
| 743 | 140 | 3:00 | 3DME | 1292(951) |
| 849 | 160 | 2:37 | 2DME | 974(633) |



ICAO - INSTRUMENT APPROACH CHART

AD 2 LIRA 5-23

REMARK: RWY 15 traffic pattern right.

APP Roma Arrivals
Roma Director
119.20

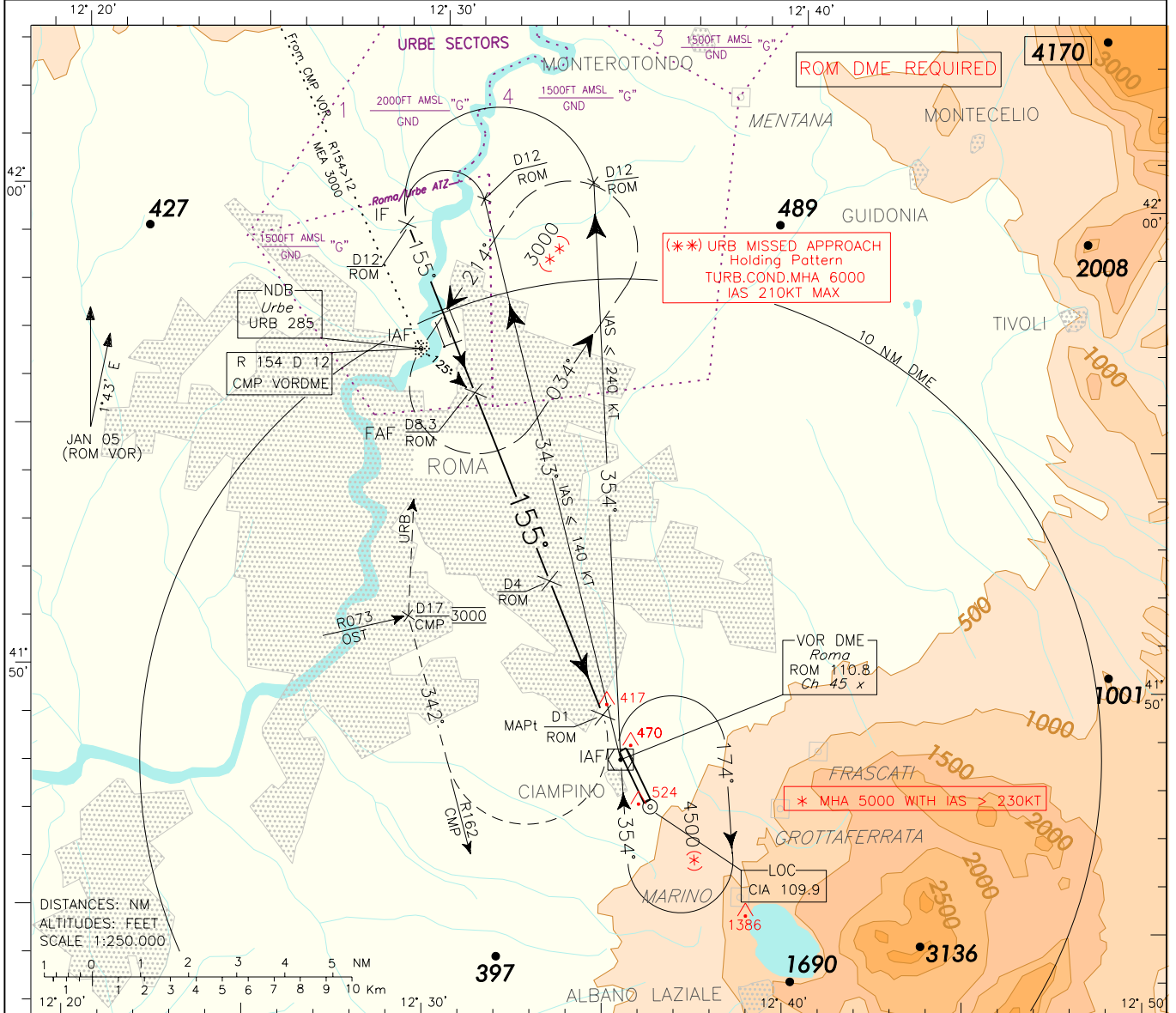
TWR Ciampino Tower
120.50
Ciampino Ground
121.75

AD ELEV
427

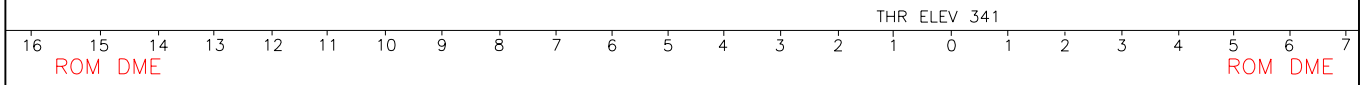
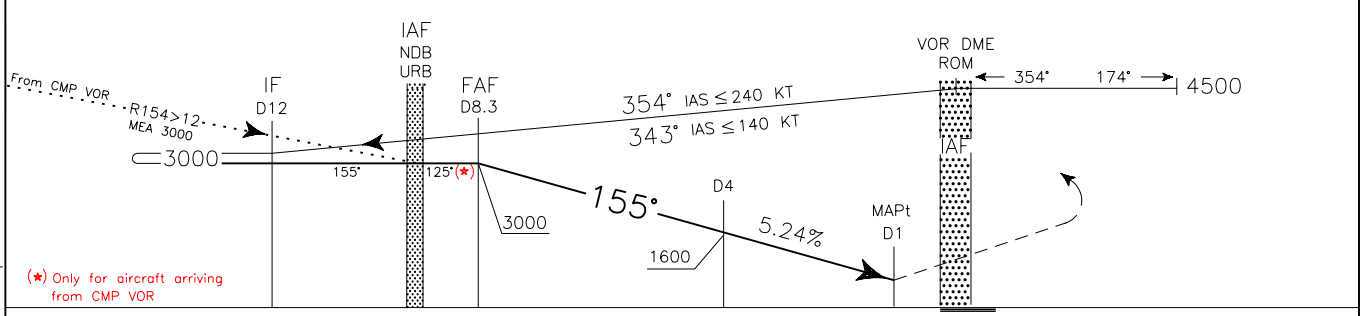
L I R A
R O M A
V O R - Y
R W Y 1 5

DOC.8168-ED.4-1993-AMD 12

CHANGE: NEW AD SECTION



TRANSITION ALT 6000 MISSED APPROACH: As soon as possible turn right (IAS MAX 185 during turn) to join and follow RDL 162 CMP VOR (track 342°) climbing to 3000 Ft. At D17 CMP DME (RDL 073 OST VOR), to be reached at 3000 Ft steady, turn right inbound to URB NDB.



| OCA (OCH) | | A | B | C | D | REMARK (1): CIRCLING TO RWY33 FLW INSTR APCH PROC RWY15: - IS ALLOWED ONLY IF PAPI AND RTIL RWY33 ARE AVBL. - IS ALLOWED ACCORDING TO REGULATION PUBLISHED IN AIP AD 2 LIRA - ITEM 20 LOCAL FLIGHT RESTRICTIONS. - IS ALLOWED ONLY W OF THE FIELD. - DUE TO SIGNIFICANT OBST SHALL BE PERFORMED W/ 4NM ROM DME WITHOUT OVERSHOOTING EXTENDED RCL. MIL AND STATE FLT NOT AFFECTED. | FT PER MIN | GS | FAF MAPt 7NM | DIST 7DME | ALT(HGT) 2564(2223) | MNM SECT ALT ROM VOR |
|----------------------|-----|---|-----------|------------|------------|--|------------|-----|--------------|-----------|---------------------|-------------------------|
| STRAIGHT IN APPROACH | VOR | 750 (409) | | | | | | 424 | 80 | 5:15 | 6DME | |
| | | WARNING: TIMING NOT ALLOWED FOR DEFFINING MAPt | | | | | 531 | 100 | 4:11 | 5DME | 1928(1587) | |
| | | CIRCLING (1) | | | | | 637 | 120 | 3:30 | 4DME | 1610(1269) | |
| | | 1100(673) | 1200(773) | 1700(1273) | 1830(1403) | | 743 | 140 | 3:00 | 3DME | 1292(951) | |
| | | | | | | | 849 | 160 | 2:37 | 2DME | 974(633) | |

ICAO - INSTRUMENT APPROACH CHART

AD 2 LIRA 5-25

REMARK: RWY 15 traffic pattern right.

APP Roma Arrivals
Roma Director 119.20
TWR Ciampino Tower 120.50
Ciampino Ground 121.75

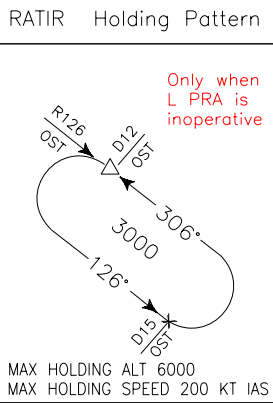
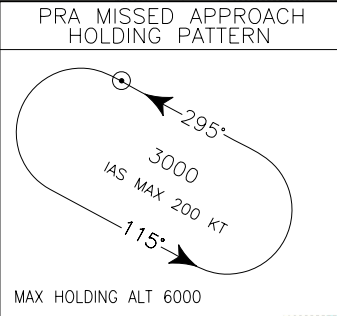
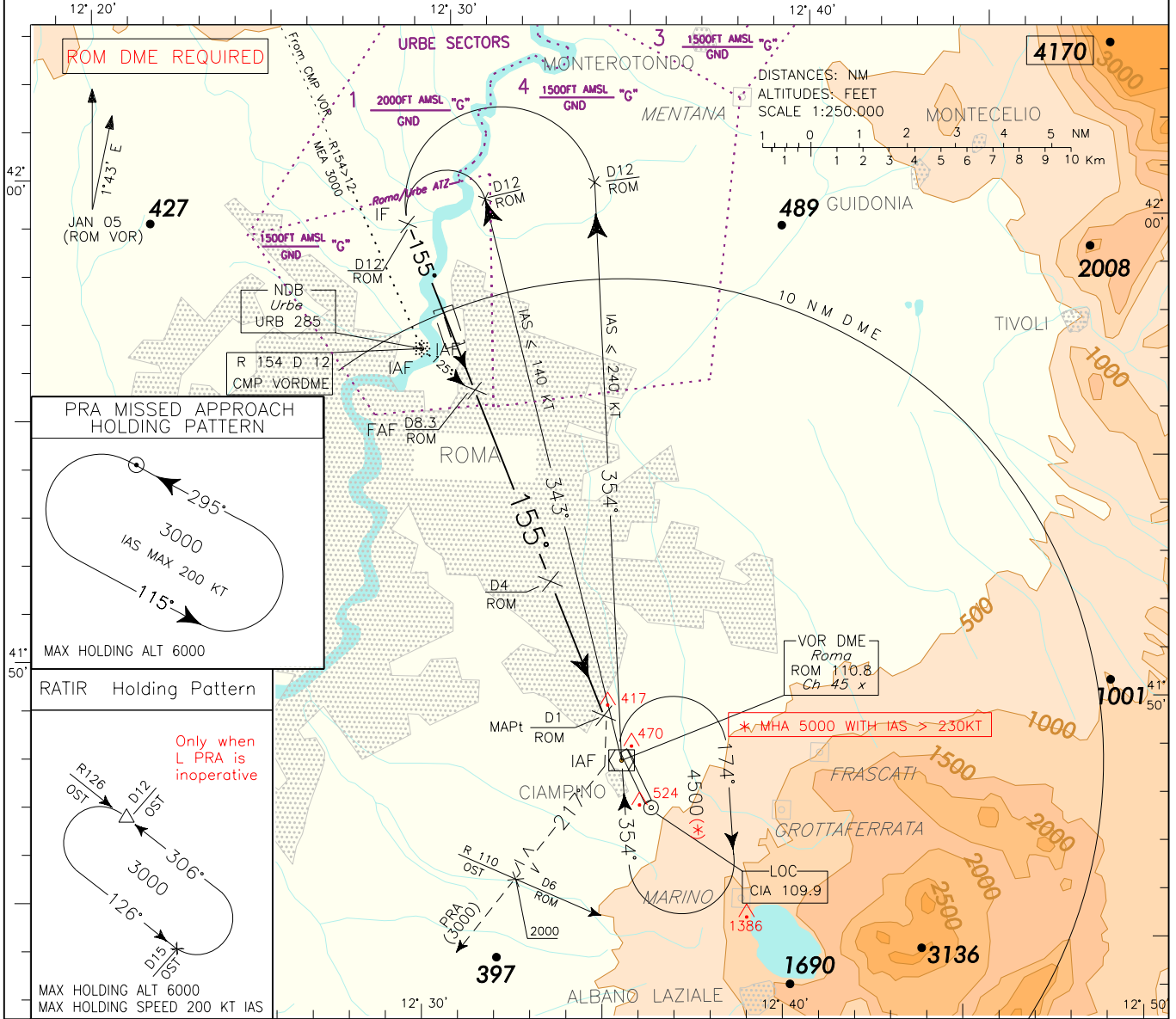
AD ELEV 427

L I R A

ROMA/CIAMPINO
VOR-Z RWY 15

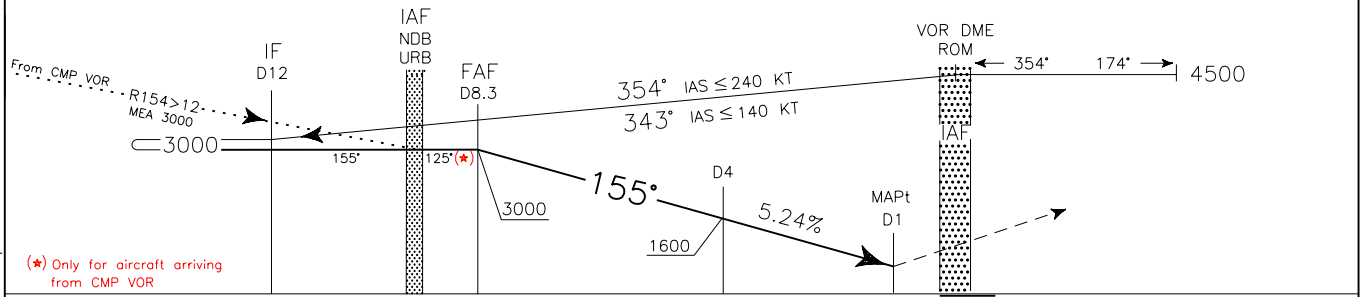
DOC.8168-ED.4-1993-AMD 12

CHANGE: NEW AD SECTION



TRANSITION ALT 6000

MISSED APPROACH: As soon as possible turn right (IAS MAX 185 KTS) on RDL 217 ROM VOR to PRA L or RATIR in case of PRA inoperative. Cross D6 (RDL/QDR 110 OST VOR/NDB) at 2000 Ft or above, PRA L/RATIR at 3000 Ft.

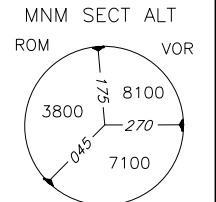


ROM DME 16 15 14 13 12 11 10 9 8 7 6 5 4 3 2 1 0 1 2 3 4 5 6 7 ROM DME

| OCA (OCH) | A | B | C | D |
|--|-----------|-----------|------------|------------|
| STRAIGHT IN APPROACH | VOR | 750 (409) | | |
| WARNING: TIMING NOT ALLOWED FOR DEFFINING MAPt | | | | |
| CIRCLING (1) | 1100(673) | 1200(773) | 1700(1273) | 1830(1403) |

REMARK (1): CIRCLING TO RWY33 FLW INSTR APCH PROC RWY15:
 - IS ALLOWED ONLY IF PAPI AND RTIL RWY33 ARE AVBL.
 - IS ALLOWED ACCORDING TO REGULATION PUBLISHED IN AIP AD 2 LIRA - ITEM 20 LOCAL FLIGHT RESTRICTIONS.
 - IS ALLOWED ONLY W OF THE FIELD.
 - DUE TO SIGNIFICANT OBST SHALL BE PERFORMED W/ 4NM ROM DME WITHOUT OVERTHOOTING EXTENDED RCL. MIL AND STATE FLT NOT AFFECTED.

| FT PER MIN | GS | FAF MAPt 7NM | DIST 7DME | ALT(HGT) 2564(2223) |
|------------|-----|--------------|-----------|---------------------|
| 425 | 80 | 5:15 | 6DME | 2246(1905) |
| 531 | 100 | 4:11 | 5DME | 1928(1587) |
| 637 | 120 | 3:30 | 4DME | 1610(1269) |
| 743 | 140 | 3:00 | 3DME | 1292(951) |
| 849 | 160 | 2:37 | 2DME | 974(633) |



ICAO - INSTRUMENT APPROACH CHART

AD 2 LIRA 5-27

REMARK: RWY 15 traffic pattern right
 REMARK: final TR offset 10' from RCL. TR intersect ext. RCL at 1400m

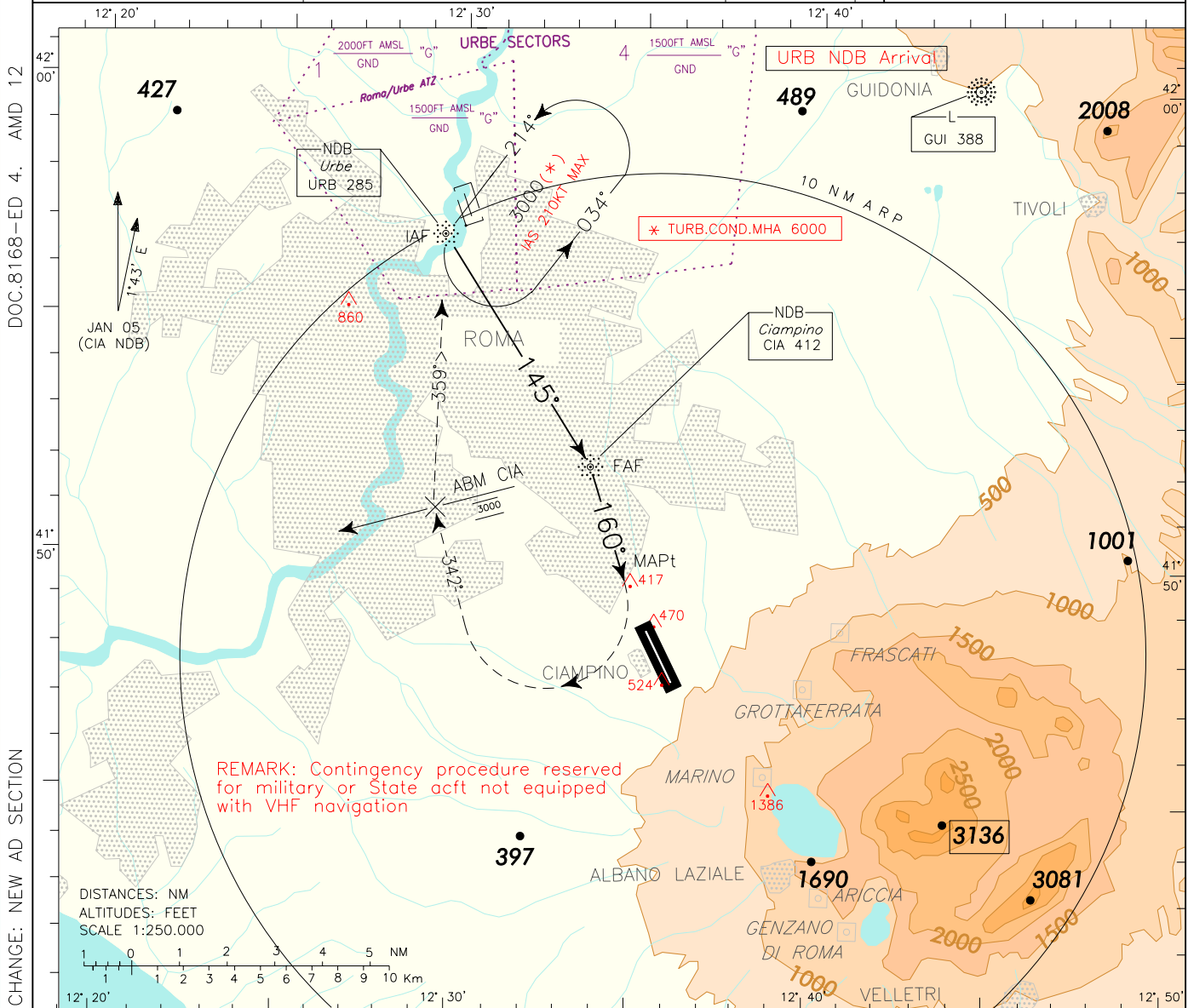
APP Roma Arrivals
 Roma Director 119.20
 TWR Ciampino Tower 120.50
 Ciampino Ground 121.75

AD ELEV 427

L I R A

ROMA/CIAMPINO
 NDB

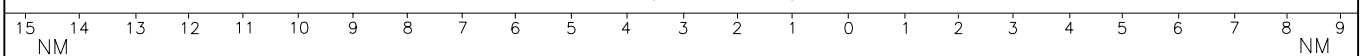
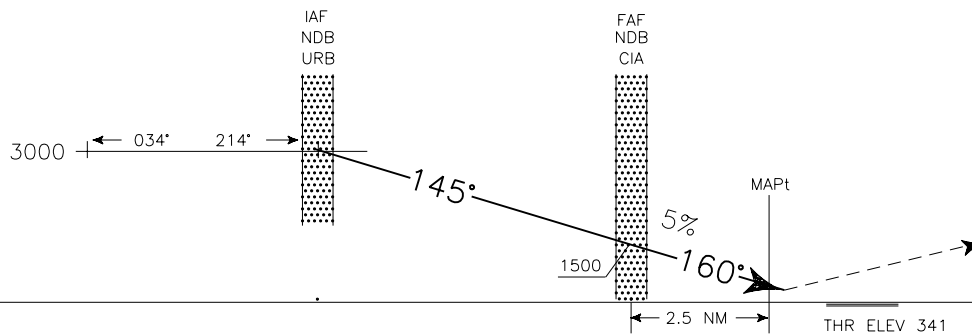
RWY 15



REMARK: Contingency procedure reserved for military or State acft not equipped with VHF navigation

TRANSITION ALT 6000

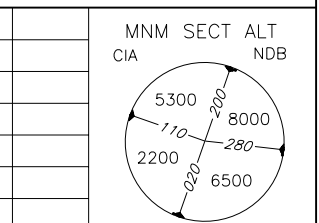
MISSED APPROACH: As soon as possible turn right (IAS MAX 185 during turn), on TR 342° climbing to 3000ft. Cross ABM CIA NDB at 3000ft steady then URB NDB on TR 359°.



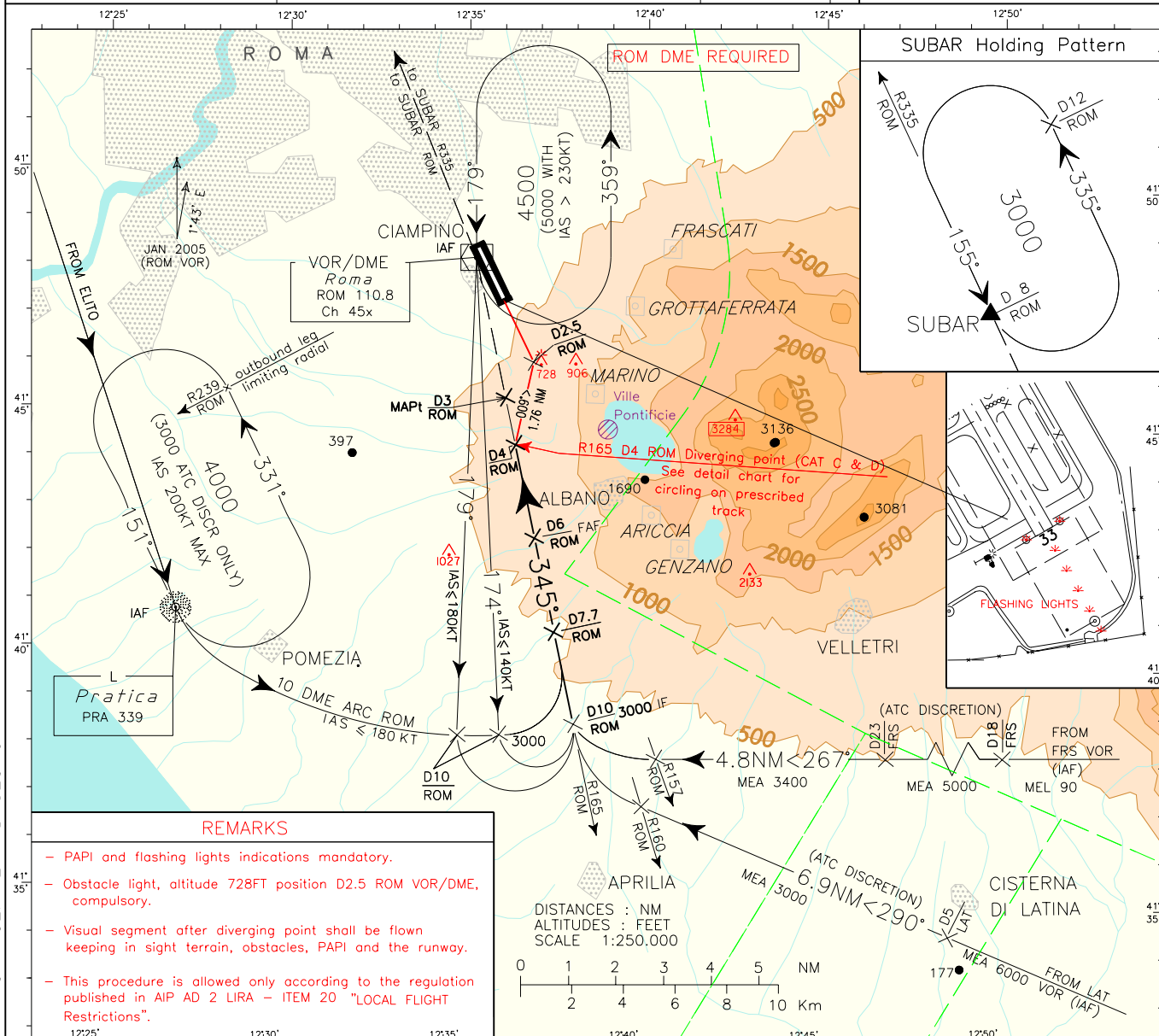
| OCA (OCH) | | A | B | C | D |
|----------------------|-----|------------|-----------|------------|------------|
| STRAIGHT IN APPROACH | NDB | 1100 (759) | | | |
| | | | | | |
| | | | | | |
| CIRCLING | | 1100(673) | 1200(773) | 1700(1273) | 1830(1403) |

REMARKS FOR CIRCLING
 CIRCLING TO RWY33 FLW INSTR APCH PROC RWY33:
 - IS ALLOWED ONLY IF PAPI AND RTIL RWY33 ARE AVBL.
 - IS ALLOWED ACCORDING TO REGULATION PUBLISHED IN AIP AD 2 LIRA - ITEM 20 LOCAL FLIGHT RESTRICTIONS.
 - IS ALLOWED ONLY W OF THE FIELD.
 - DUE TO SIGNIFICANT OBST SHALL BE PERFORMED W 4NM ROM OME WITHOUT OVERSHOOTING EXTENDED RCL. MIL AND STATE FLT NOT AFFECTED.

| FT PER MIN | GS | CIA-MAP |
|------------|-----|---------|
| 405 | 80 | 1 : 52 |
| 510 | 100 | 1 : 30 |
| 610 | 120 | 1 : 15 |
| 710 | 140 | 1 : 04 |
| 810 | 160 | 0 : 56 |



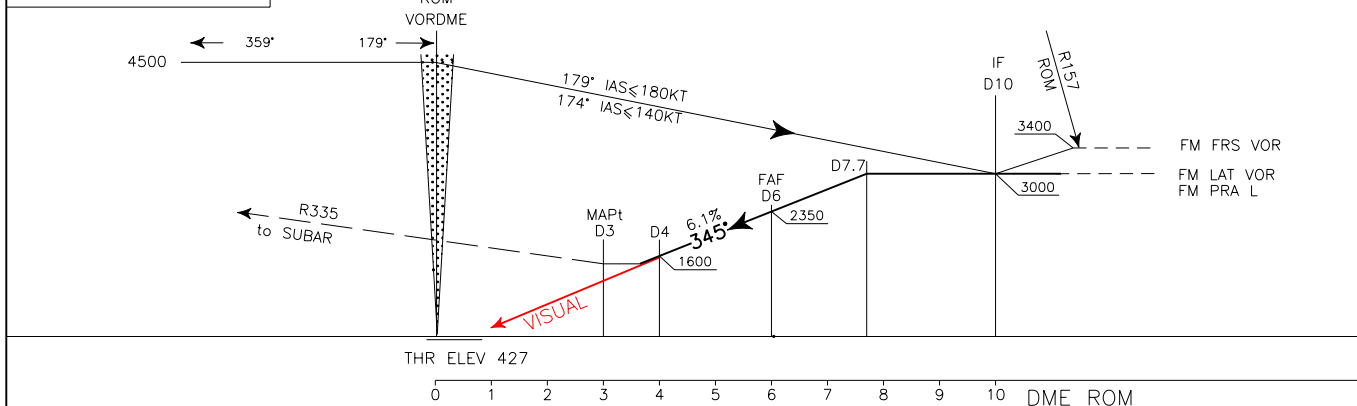
| | | | | | |
|---|-------------------|--------------------|---------|------------------|---|
| <p>WARNING: (345)° is instrument final approach track not aligned with runway 33 longitudinal axis</p> | APP Roma Arrivals | TWR Ciampino Tower | AD ELEV | L I R A | <p>ROMA/CIAMPINO ATC DISCRETION VOR A (CIRCLING) RWY 33</p> |
| | Roma Director | Ciampino Ground | 427 | | |
| | 119.20 | 121.75 | | | |



- REMARKS**
- PAPI and flashing lights indications mandatory.
 - Obstacle light, altitude 728FT position D2.5 ROM VOR/DME, compulsory.
 - Visual segment after diverging point shall be flown keeping in sight terrain, obstacles, PAPI and the runway.
 - This procedure is allowed only according to the regulation published in AIP AD 2 LIRA - ITEM 20 "LOCAL FLIGHT Restrictions".

CHANGE: NEW AD SECTION

TRANSITION ALT 6000 MISSED APPROACH: Proceed on RDL 335 ROM VOR climbing to 3000FT direct to SUBAR



| OCA (OCH) | | A | B | C | D | FT PER MIN | GS | FAF MAPt 3NM | DIST | ALT(HGT) | MNM SECT ALT |
|------------------------------|------------------|------------|---|---|---|------------|-----|--------------|---------|------------|--------------|
| CIRCLING ON PRESCRIBED TRACK | SEE DETAIL CHART | 1350 (923) | | | | 500 | 80 | 2:15 | 7.7 DME | 3000(2573) | |
| | | | | | | 625 | 100 | 1:48 | 7DME | 2725(2298) | |
| | | | | | | 750 | 120 | 1:30 | 6DME | 2350(1923) | |
| | | | | | | 875 | 140 | 1:17 | 5DME | 1975(1548) | |
| | | | | | | 1000 | 160 | 1:08 | 4DME | 1600(1173) | |

CIRCLING TO RWY 33 ON PRESCRIBED TRACK ONLY. SEE AD2 LIRA 5-31

VAC ROMA/CIAMPINO RWY 33
 PRESCRIBED TRACK FOR
 VISUAL MANOEUVRING TO RWY 33

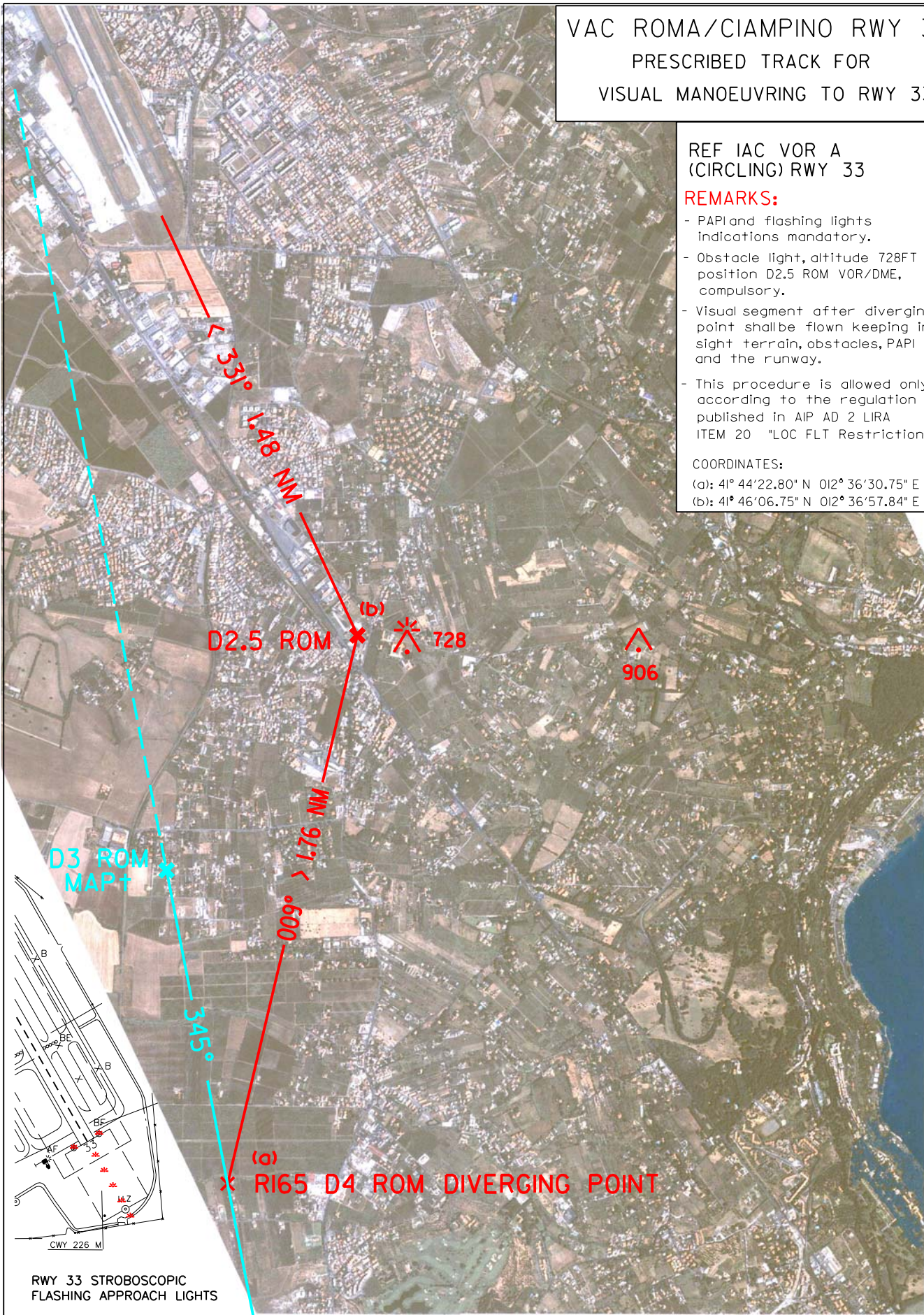
REF IAC VOR A
 (CIRCLING) RWY 33

REMARKS:

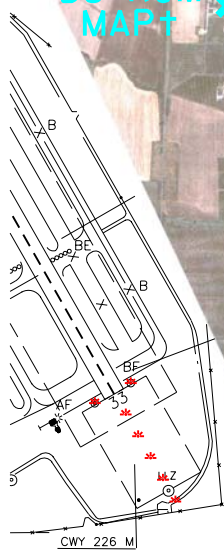
- PAPI and flashing lights indications mandatory.
- Obstacle light, altitude 728FT position D2.5 ROM VOR/DME, compulsory.
- Visual segment after diverging point shall be flown keeping in sight terrain, obstacles, PAPI and the runway.
- This procedure is allowed only according to the regulation published in AIP AD 2 LIRA ITEM 20 "LOC FLT Restrictions".

COORDINATES:

(a): 41° 44'22.80" N 012° 36'30.75" E
 (b): 41° 46'06.75" N 012° 36'57.84" E



CHANGE: NEW AD SECTION



RWY 33 STROBOSCOPIC FLASHING APPROACH LIGHTS